

DEPARTMENT OF THE ARMY TECHNICAL MANUAL

ORGANIZATIONAL, DIRECT AND GENERAL SUPPORT MAINTENANCE

REPAIR PARTS AND SPECIAL TOOLS LIST

FOR

TARGET MECHANISM, NIGHT FIRING, SMALL ARMS: M40

(6920-678-8478)

Headquarters, Department of the Army, Washington, D. C.

8 October 1971

Current as of 20 August 1971

This revision updates the repair parts and special tools lists to current format according to AR 700- 18.

		Page
SECTION	I. INTRODUCTION.....	1
	II. REPAIR PARTS LIST .....	5
	III. SPECIAL TOOLS LIST .....	7
	IV. REPAIR PARTS LIST .....	8
	V. SPECIAL TOOLS LIST .....	19
	VI. FEDERAL STOCK NUMBER AND REFERENCE NUMBER INDEX.....	29

LIST OF ILLUSTRATIONS

Figure	Title	Page
1.	Night firing target mechanism M40-left front view .....	20
2.	Cabinet assembly-partially exploded view.....	20
3.	Counter chassis assembly-partially exploded top view. ....	21
4.	Counter chassis assembly-partially exploded bottom view .....	22
5.	Flasher chassis assembly-partially exploded top view .....	23
6.	Flasher chassis assembly-partially exploded bottom view .....	24
7.	Terminal box assembly-partially exploded view .....	25
8.	Target holder assembly-exploded view. ....	26
9.	Hit switch assembly-partially exploded view. ....	27
10.	Utility box assembly. ....	28
11.	Target indicator light-partially exploded view.....	28

\*This manual supersedes TM 9-6920-205-24P, 2 March 1962.

**ORGANIZATIONAL, DIRECT AND GENERAL SUPPORT  
MAINTENANCE REPAIR PARTS AND  
SPECIAL TOOLS LIST**

**Section I. INTRODUCTION**

**1. Scope.**

This manual lists repair parts and special tools required for the performance of organizational, direct and general support maintenance of the small arms night firing target mechanism M40.

**2. General.**

The repair parts and special tools list is divided into the following sections:

*a. Repair Parts List-Section II.* A list of repair parts authorized at the organizational level for the performance of maintenance. The list also includes parts which must be removed for replacement of the authorized parts. Parts lists are composed of functional groups with the parts in each group listed in figure and item number sequence.

*b. Special Tools List-Section III.* A list of special tools, test and support equipment authorized for the performance of maintenance at the organizational level.

*c. Repair Parts List-Section IV.* A list of repair parts authorized at the direct support and general support levels for the performance of maintenance. The list also includes parts which must be removed for replacement of the authorized parts. Parts lists are composed of functional groups with the parts in each group listed in figure and item number sequence.

*d. Special Tools List-Section V.* A list of special tools, test and support equipment authorized for the performance of maintenance at the direct support and general support levels.

*e. Federal Stock Number and Reference Number Index-Section VI.* A list, in ascending numerical sequence, of all Federal stock numbers appearing in the listings, followed by a list, in alphanumeric sequence, of all reference numbers appearing in the listings. Federal stock numbers and reference numbers are cross-referenced to each illustration figure and item number appearance.

**3. Explanation of Columns.**

The following provides an explanation of columns found in the tabular listings.

*a. Source, Maintenance, and Recoverability Codes (SMR).*

(1) *Source code.* Indicates the source for the listed items. Source codes are:

<i>Code</i>	<i>Explanation</i>
.....P	Repair parts, special tools and test equipment supplied from the GSA / LSA or Army supply system and authorized for use at indicated maintenance categories.

P2.....Repair parts, special tools and test equipment which are procured and stocked for insurance purposes because the combat or military essentiality of the end item dictates that a minimum quantity be available in the supply system.

P9.....Assigned to items which are NSA design controlled: unique repair parts, special tools, test, measuring, and diagnostic equipment which are stocked and supplied by the Army COMSEC Logistic System and which are not subject to the provisions of AR 380-41.

P10....Assigned to items which are NSA design controlled: special tools, test, measuring, and diagnostic equipment for COMSEC support which are accountable under the provisions of AR 380-41 and which are stocked and supplied by the Army COMSEC Logistic System.

M.....Repair parts, special tools and test equipment which are not procured or stocked as such in the supply system but are to be manufactured at indicated maintenance levels.

A.....Assemblies which are not procured or stocked as such but are made up of two or more units. Such component units carry individual stock numbers and descriptions, are procured and stocked separately, and can be assembled to form the required assembly at indicated maintenance categories.

X.....Parts and assemblies that are not procured or stocked because the failure rate is normally below that of the applicable end item or component. The failure of such part or assembly should result in retirement of the end item from the supply system.

X1.....Repair parts which are not procured or stocked. The requirement for such items will be filled by the next higher assembly or component.

X2.....Repair parts, special tools and test equipment which are not stocked and have no foreseen mortality. The indicated maintenance category requiring such repair parts will attempt to obtain the parts through cannibalization or salvage. The item may be requisitioned, with exception data, from the end item manager for immediate use.

G.....Major assemblies that are procured with PEMA funds for initial issue only as exchange assemblies at DS and GS level. These assemblies will not be stocked above DS and GS level or returned to depot supply level.

**NOTE**

**Cannibalization or salvage may be used as a source of supply for any items source coded above except those coded X and aircraft support items as restricted by AR 700-42.**

(2) *Maintenance code.* Indicates the lowest category of maintenance authorized to install the repair part and / or use the special tool or test equipment for each application. Capabilities of higher maintenance categories are considered equal or better. Maintenance codes are:

<i>Code</i>	<i>Explanation</i>
C .....	Crew/operator
O .....	Organizational maintenance
F .....	Direct support maintenance
H .....	General support maintenance
D .....	Depot maintenance

(3) *Recoverability code.* Indicates whether unserviceable items should be returned for recovery or salvage. Items not coded are nonrecoverable. Recoverability codes are:

<i>Code</i>	<i>Explanation</i>
R.....	Repair parts (assemblies and components), special tools and test equipment which are considered economically repairable at direct and general support maintenance levels. When the item is no longer economically repairable, it is normally disposed of at the GS level. When supply considerations dictate, some of these repair parts may be listed for automatic return to supply for depot level repair as set forth in AR 710-50. When so listed, they will be replaced by supply on an exchange basis.
S.....	Repair parts, special tools and test equipment, and assemblies which are economically repairable at DS and GS activities and which normally are furnished by supply on an exchange basis. When items are determined by a GSU to be uneconomically repairable, they will be evacuated to a depot for evaluation and analysis before final disposition.
T.....	High dollar value recoverable repair parts, special tools and test equipment which are subject to special handling and are issued on an exchange basis. Such items will be repaired or overhauled at depot maintenance activities only. No repair may be accomplished at lower levels.
U.....	Repair parts, special tools and test equipment specifically selected for salvage by reclamation

units because of precious metal content, critical materials, high dollar value, or reusable casings or castings.

*b. Federal Stock Number.* Indicates the Federal stock number assigned to the item and will be used for requisitioning purposes.

*c. Description.* Indicates the Federal item name and a minimum description required to identify the item. The last line indicates the reference number followed by the applicable Federal Supply Code for Manufacturer FSCM in parentheses. The FSCM is used as an element in item identification to designate manufacturer or distributor or Government agency, etc., and is identified in SB 708-42. Items that are included in kits and sets are listed below the name of the kit or set with quantity of each item in the kit or set indicated in front of the item name.

*d. Unit of Measure (U /M).* Indicates the standard or basic quantity by which the listed item is used in performing the actual maintenance function. This measure is expressed by a two-character alphabetical abbreviation, e.g., ea, in, pr, etc., and is the basis used to indicate quantities and allowances in subsequent columns. When the unit of measure differs from the unit of issue, the lowest unit of issue that will satisfy the required units of measure will be requisitioned.

*e. Quantity Incorporated in Unit.* Indicates the quantity of the item used in the breakout shown on the illustration figure, which is prepared for a functional group, subfunctional group, or an assembly. A "V" appearing in this column in lieu of a quantity indicates that no specific quantity is applicable, e.g., shims, spacers, etc.

*f. 15-Day Organizational Maintenance Allowances.*

(1) The allowance columns are divided into four subcolumns. Indicated in each subcolumn is the total quantity of items authorized for the number of equipments supported. Subsequent appearances have the letters "REF" in the allowance columns, indicating that the total allowance quantities are shown with the first appearance of the item where shown as a supply item. Items authorized for use as required, but not for initial stockage are identified with an asterisk in the allowance column.

(2) The quantitative allowances for organizational level of maintenance represent one initial prescribed load for a 1.5-day period for the number of equipments supported. Units and organizations authorized additional prescribed loads will multiply the number of prescribed loads authorized by the quantity of repair parts reflected in the appropriate density column to obtain the total quantity of repair parts authorized.

(3) Organizational units providing maintenance for more than 100 of these equipments shall determine the total quantity of parts required by converting the equipment quantity to a decimal factor by placing a decimal point before the next to last digit of the number to indicate hundredths, and multiplying the decimal factor by the parts quantity authorized in the 51-100 allowance column. Example: authorized allowance for 51-100 equipments is 12; for 140 equipments multiply 12 by 1.40: indicating 16.80 rounded off to 17 parts required.

(4) Subsequent changes to allowance lists will be accomplished in accordance with AR 735-35. In addition, the major commands will be authorized to approve reductions in stockage allowances (range and quantity). If additional items are considered necessary, recommendation should be forwarded to Commanding General, Headquarters, U. S. Army Weapons Command. ATTN: AMSWE-MAP, Rock Island, Illinois, 61201, for exception or revision to the allowance list.

*g. 30-Day DS/ GS Maintenance Allowances.*

**NOTE**

**Allowances in GS column are for GS maintenance only.**

(1) The allowance columns are divided into three subcolumns. Indicated in each subcolumn, opposite the first appearance of each item in each category of maintenance, is the total quantity of items authorized for the number of equipments supported. Subsequent appearances of the same item will have the letters "REF" in the applicable allowance columns, indicating total allowance quantities will be shown with the first appearance of the item when shown as a supply item. Items authorized for use as required but not for initial stockage are identified with an asterisk in the allowance column.

(2) The quantitative allowances for DS/GS levels of maintenance will represent initial stockage for a 30-day period for the number of equipments supported.

(3) Determination of the total quantity of parts required for maintenance of more than 100 of these equipments can be accomplished by converting the equipment quantity to a decimal factor by placing a decimal point before the next to last digit of the number to indicate hundredths and multiplying the decimal factor by the parts quantity authorized in the 51-100 allowance column. Example: authorized allowance for 51-100 equipments is 40; for 150 equipments multiply 40 by 1.50, indicating 60 parts required.

*h. 1-Year Allowances Per 100 Equipments/Contingency Planning Purposes.* This column indicates opposite the first appearance of each item the total quantity required for distribution and contingency planning purposes. Subsequent appearances of the same item will have the letters "REF" in this column when shown as a supply item. The range of items indicates total quantities of all authorized items required to provide for adequate support of 100 equipments for one year.

*i. Depot Maintenance Allowance Per 100 Equipments.* This column indicates opposite the first appearance of each item the total quantity authorized for depot maintenance of 100 equipments. Subsequent appearances of the same item will have the letters "REF" in this column when shown as a supply item. Items authorized for use but not for initial stockage are identified with an asterisk in the allowance column.

*j. Illustration.* This column is divided as follows:

(1) *Figure number.* Indicates the figure number of the illustration on which the item is shown.

(2) *Item number.* Indicates the callout number used to reference the item on the illustration.

**4. Special Information.**

The following publication pertains to the small arms night firing target mechanism M40:

TM 9-6920-205-14 .....Operator, Organizational,  
and Field Maintenance  
Manual: Target  
Mechanism, Night Firing,  
Small Arms: M40.

**5. How to Locate Repair Parts.**

*a.* When Federal stock number or reference number is unknown:

(1) *First.* Using the table of contents determine the functional group within which the repair part belongs. This is necessary since illustrations are prepared for functional groups and listings are divided into the same groups.

(2) *Second.* Find the illustration covering the functional group to which the repair part belongs.

(3) *Third.* Identify the repair part on the illustration and note the illustration figure and item number of the repair part.

(4) *Fourth.* Using the Repair Parts Listing, find the functional group to which the repair part belongs and locate the illustration figure and item number noted on the illustration.

*b.* When Federal stock number or reference number is known:

(1) *First.* Using the index of Federal Stock Numbers and Reference Numbers find the pertinent Federal stock number or reference number. This index is in ascending FSN sequence followed by a list of reference numbers in ascending alphanumeric sequence, cross-referenced to the illustration figure number and item number.

(2) *Second.* Using the Repair Parts Listing, find the functional group of the repair part and the illustration figure number and item number referenced in the Index of Federal Stock Numbers and Reference Numbers.

**6. Abbreviations.**

<i>Abbreviation</i>	<i>Explanation</i>
cop.....	copper
cres.....	corrosion-resistant steel
cond.....	condenser
dp .....	depth
dpdt.....	double-pole double-throw

<i>Abbreviation</i>	<i>Explanation</i>
fi-ck-hd.....	flat-countersunk-head
nm .....	nonmetallic
porm .....	plus or minus
spdt.....	single-pole double-throw
spst.....	single-pole single-throw

**7. Recommendations for Maintenance Publications Improvements.**

You can improve this manual by calling attention to errors and by recommending improvements, using DA Form 2028 (Recommended Changes to Publications) or by a letter, and mailing directly to the Commanding General, Headquarters, U. S. Army Weapons Command, ATTN: AMSWF MAP, Rock Island, Illinois 61201. A reply will furnished directly to you.

Section II. REPAIR PARTS LIST

(1) SMR CODE	(2) FEDERAL STOCK NUMBER	(3) DESCRIPTION  REF NUMBER & MFR CODE	(4) UNIT OF MEAS  USABLE ON CODE	(5) QTY INC IN UNIT	(6) 15-DAY ORGANIZATIONAL MAINTENANCE ALW				(7) ILLUS- TRATION	
					(a)	(b)	(c)	(d)	(a)	(b)
					1-5	6-20	21-50	51-100	FIG. NO.	ITEM NO.
P O	6240-155-8706	SMALL, ARMS NIGHT FIRING MECHANISM, M40 (COUNTER CHASSIS ASSEMBLY- TOP VIEW LAMP, INCANDESCENT: MIN-BAY-BASE, SGL-FIL, 6.3 V. 1-3/16 O/A LG MS 15771-2 (96906)	EA	15	*	*	*	*	3	12
P O	5020-280-4960	COUNTER CHASSIS ASSEMBLY- BOTTOM VIEW FUSE, CARTRIDGE: 2 AMP, 250 V MAX, AC, DC, NORMAL INSTANTANEOUS, FERRULE TYPE TERMINAL, 1/4 DIA, ONE TIME 1 1/4 LG, 1/4 DIA MS 90078-11 (96906)	EA	1	*	*	*	*	4	4
P O	5935-259-1818	CONNECTOR, PLUG, ELECTRICAL: 2 MALE CONTACTS, STGHT TYPE, 15 AMP, 125 V. W/ CORD GRIPS, 1.437 W. 1.500 LG 7545990 (19204)	EA	1	*	*	*	*	4	17
P O	6240-155-7836	FLASHER CHASSIS ASSEMBLY- TOP VIEW LAMP, INCANDESCENT: 28 V, 0.04 AMP CURRENT DESIGN, MIDGET FLANGE BASE, T-1 3/4 CLEAR BULB, WHT LT OMITTED, TUNG FIL, 5/8 O/A LG MS 25237-327 (96906)	EA	2	*	*	*	*	5	3
P O	5920-280-4960	FLASHER (CHASSIS ASSEMBLY- BOTTOM VIEW FUSE, CARTRIDGE: 2 AMP, 250 V MAX, AC, DC. NORMAL INSTANTANEOUS, FERRULE TYPE TERMINAL, ONE TIME, 1 1/4 LG, 1/4 DIA MS 90078-11 (96906)	EA	1	*	*	*	*	6	4
P O	5935-259-1818	CONNECTOR, PLUG, ELECTRICAL: 2 MALE CONTACTS, STGHT TYPE, 15 AMP, 125 V, W/CORD GRIPS, 1.437 W. 1.500 LG 7545990 (19204)	EA	15	*	*	*	*	6	10
P O	6920-070-5666	TERMINAL BOX ASSEMBLY JUMPER ASSEMBLY, TERMINAL BOX: 7546172 (19204)	EA	15	*	*	*	*	7	7
P O	5310-828-8189	TARGET HOLDER ASSEMBLY NUT, PLAIN, WING: S CD-PLTDEA W/CHROMATE, 5/16-18UNC-2B, 1- 17/32 W, 5/8 THK, 1.243 O/A W, 0.635 O/A H MS 35425-41 (96906)	EA	3	*	*	*	*	8	3
P O	5935-259-1818	HIT SWITCH ASSEMBLY CONNECTOR, PLUG, ELECTRICAL: 2 MALE CONTACTS, STGHT TYPE, 15 AMP, 125 V, W/CORD GRIPS, 1.437 W, 1.500 LG 7545990 (19204)	EA	16	*	*	*	*	9	9

Section II. REPAIR PARTS LIST--Continued

(1) SMR CODE	(2) FEDERAL STOCK NUMBER	(3) DESCRIPTION  REF NUMBER & MFR CODE	(4) UNIT OF MEAS	(5) QTY INC IN UNIT	(6) 15-DAY ORGANIZATIONAL MAINTENANCE ALW				(7) ILLUS- TRATION	
					(a)	(b)	(c)	(d)	(a)	(b)
					1-5	6-20	21-50	51-100	FIG. NO.	ITEM NO.
P O	6210-850-6897	TARGET INDICATOR LIGHT LIGHT, INDICATOR: AMBER LENS, TWO SOLDER LUG TYPE TERM., 125 V, 1.125 O/A DIA, 2.671 O/A LG MS 90286-LH61FA2 (96906)	EA	15	*	*	*	*	11	1
P O	6240-155-7296	LAMP, INCANDESCENT: CANDELABRA- BAYONET BASE, DBLE CONTACT, 24-28 V, TUNG FIL, CLR, WHT LT MS 15613-2 (96906)	EA	15	*	*	*	*	11	2

Section III. SPECIAL TOOLS LIST

(1) SMR CODE	(2) FEDERAL STOCK NUMBER	(3) DESCRIPTION  REF NUMBER & MFR CODE	(4) UNIT OF MEAS  USABLE ON CODE	(5) QTY INC IN UNIT	(6) 15-DAY ORGANIZATIONAL MAINTENANCE ALW				(7) ILLUS- TRATION	
					(a)	(b)	(c)	(d)	(a)	(b)
					1-5	6-20	21-50	51-100	FIG. NO.	ITEM NO.
.....	.....	TOOL KIT, SMALL ARMS REPAIRMAN: (FSN 4933-357-7770) (LISTED IN SC 4933- 95-CL-A071	.....	.....	.....	.....	.....	.....	.....	.....



Section IV. REPAIR PARTS LIST

(1) SMR CODE	(2) FEDERAL STOCK NUMBER	(3) DESCRIPTION  REFERENCE NUMBER & MFR. CODE      USABLE ON CODE		(4) UNIT OF MEAS	(5) QTY INC IN UNIT	(6) 30 DAY DS MAINT ALLOWANCE			(7) 30DAY GS MAINT ALLOWANCE			(8) 1-YR ALW PER 100 EQUIP CNTGCY	(9) DEPOT MAINT ALW PER 100 EQUIP	(10) ILLUSTRATION			
						(a)	(b)	(c)	(a)	(b)	(c)			(a)	(b)		
						1-20	21-50	51-100	1-20	21-50	51-100			FIGURE NO.	ITEM NO/		
P-F-	5340-251-7971		SMALL ARMS NIGHT FIRING TARGET MECHANISM M40 CABINET ASSEMBLY HANDLE, BAIL: S, CD- (JOR ZN-CHROMATE-FIN., 0.063 ..... THK. :3 5/8 O/A LG MS 35791-1 (96906)	EA	2	*	*	*	*	*	*	*		2	1		
P-F-	5305-957-6272		SCREW, MACHINE: FL.-CK-HD, S, CD-PLTD ..... W/CHROMATE, NO. 10-24UNC-2A, 3/8, LG MS 35190-269 (96906)	EA	8	*	*	*	*	*	*	*		2	2		
P-F-	5310-933-8121		WASHER, LOCK: S, CD-PLTD, 0.190 ID. 0.323 OD, 0.040 ..... THK MS 35338-139 (96906)	EA	8	*	*	*	*	*	*	*		2	3		
P-F-	5310-934-9758		NUT ..... MS 35649-202 (96906)	EA	8	*	*	*	*	*	*	*		2	4		
P-F-	5305-984-4984		SCREW, MACHINE: S, CD-PLTD W/CHROMATE, NO. 6 ..... 32UNC-2A, 5/16 LG MS35206-227 (96906)	EA	20	*	*	*	*	*	*	*		2	5		
P-F-	5310-045-4007		WASHER, LOCK:..... MS 35338-41 (90906)	EA	8	*	*	*	*	*	*	*		2	6		
P-F-	5310-081-8087		NUT, SELF-LOCKING: NM INSERT DSGN TYPE, S, CD-..... PLTD W/CHROMATE, NO. 6-32UNC-3B, 5/16 W, 3/16 H MS 21044-N06 (96906)	EA	12	*	*	*	*	*	*	*		2	7		
P-F-	5340-239-0917		HANDLE, BOW:..... 7545950 (19204)	EA	1	*	*	*	*	*	*	*		2	8		
P-F-	5305-688-2021		SCREW, CAP, HEXAGON HEAD: CRES, PASS-FIN., 1/4..... 28UNF-2A. 3/8 NOM LG MS 35308-1 (96906)	EA	4	*	*	*	*	*	*	*		2	9		
P-F-	5310-043-5862		WASHER, LOCK: SPLIT, LT, CRES, 1/4 SCREW SIZE, S, ..... PASS-FIN. MS 35337-82 (96906)	EA	4	*	*	*	*	*	*	*		2	10		
X1--			LEG CABINET..... 7546241 (19204)		2									2	11		
X1--			PANEL, DOOR..... 7545979 (19204)		1									2	12		
X1--			PANEL ASSEMBLY, REAR..... 7545975 (19204)		1									2	13		
X1--			PANEL ASSEMBLY, REAR..... 7545971 (19204)		1									2	14		

Section IV. REPAIR PARTS LIST--Continued

(1) SMR CODE	(2) FEDERAL STOCK NUMBER	(3) DESCRIPTION  REFERENCE NUMBER & MFR. CODE      USABLE ON CODE		(4) UNIT OF MEAS	(5) QTY INC IN UNIT	(6) 30 DAY DS MAINT ALLOWANCE			(7) 30DAY GS MAINT ALLOWANCE			(8) 1-YR ALW PER 100 EQUIP CNTG CY	(9) DEPOT MAINT ALW PER 100 EQUIP	(10) ILLUSTRATION	
						(a)	(b)	(c)	(a)	(b)	(c)			(a)	(b)
						1-20	21-50	51-100	1-20	21-50	51-100			FIGURE NO.	ITEM NO/
P-F-	5340-598-2821	STRIKE, CATCH: PANEL AND DOOR ASSY .....		EA	6	*	*	*	*	*	*			2	15
P-F-	5305-059-4553	7545974 (19204) SCREW, MACHINE: FL-CK-HD (80-82 DEG),S, CD-PLTD,.....		EA	2	*	*	*	*	*	*			2	16
P-F-	5305-889-3000	NO. 6-32UNC-2A, 1/2 ,LG MS 35190-238 (96906) COUNTER CHASSIS ASSEMBLY--TOP VIEW SCREW, MACHINE: S, CD-PLTD W,/CHROMATE-FIN,.....		EA	14	*	*	*	*	*	*			3	1
P-F-	5950-209-6247	NO. 6-32NC-2A, 0.500 LG MS 35206-230 (96906) TRANSFORMER ASSEMBLY: .....		EA	1	*	*	*	*	*	*			3	2
P-F-	5310-081-8087	8426951 (19204) NUT, SELF-LOCKING: NM INSERT DSGN TYPE, S, CD-.....		EA	8	*	*	*	*	*	*			3	3
P-F-	5310-045-4007	PLTD W,/CHROMATE, NO. 6-32UNC-3B, 5/16 W, 3/16 H MS 21044-NO6 (96906) WASHER, LOCK: SPLIT, LT, S, CD-PLTD .....		EA	8	*	*	*	*	*	*			3	4
P-F-	5945-828-6500	W/CHROMATE, NO. 6 SCREW SIZE MS 35338-41 RELAY, TARGET NIGHT FIRING: SPDT. 2500 OHM .....		EA	1	*	*	*	*	*	*			3	5
P-F-	5305-984-4984	7545940 (18877) SCREW, MACHINE: PAN-HD, CROSS RECESS, S, CD-.....		EA	30	*	*	*	*	*	*			3	6
P-F-	6920-646-6943	PLTD W/CHROMATE, NO. 6-32UNC-2A, 5/16 LG MS 35206-227 (96906) COUNTER ASSEMBLY, ELECTRO-MECHANICAL: KIT.....		EA	15	*	*	*	*	*	*			3	7
P-F-	5310-088-0551	INDICATOR ASSY 7546168 (19204) NUT, SELF-LOCKING, HEXAGON: .....		EA	60	*	*	*	*	*	*			3	8
P-F-	5940-192-9962	MS 21044-NO4 (96906) TERMINAL BOARD: .....		EA	15	*	*	*	*	*	*			3	9
P-F-	5305-995-6653	134272 (62983) SCREW, MACHINE: FL-CK-HD (80-82 DEG), S, CD-PLTD.....		EA	60	*	*	*	*	*	*			3	10
P-F-	6210-299-5148	W /CHROMATE, NO. 4-40NC-2A, 5/16 LG MS 35190-222 (96906) LIGHT, INDICATOR:.....		EA	15	*	*	*	*	*	*			3	11
P-O-	6240-155-8706	710-121 (72619) LAMP, INCANDESCENT: MIN-BAY-BASE, SGLE-FIL.....		EA	15	*	*	*	*	*	*			3	12
		6.3 V, 1-3/16 O/A LG MS 15571-2 (96906)													

Section IV. REPAIR PARTS LIST--Continued

(1) SMR CODE	(2) FEDERAL STOCK NUMBER	(3) DESCRIPTION  REFERENCE NUMBER & MFR. CODE      USABLE ON CODE	(4) UNIT OF MEAS	(5) QTY INC IN UNIT	(6) 30 DAY DS MAINT ALLOWANCE			(7) 30DAY GS MAINT ALLOWANCE			(8) 1-YR ALW PER 100 EQUIP CNTGCY	(9) DEPOT MAINT ALW PER 100 EQUIP	(10) ILLUSTRATION	
					(a)	(b)	(c)	(a)	(b)	(c)			(a)	(b)
					1-20	21-50	51-100	1-20	21-50	51-100			FIGURE NO.	ITEM NO/
P-F-	5935-780-4338	CONNECTOR, RECEPTACLE, ELECTRICAL: KIT IN-..... DICATOR ASSY 7546174 (19204)	EA	1	*	*	*	*	*	*	*		3	13
P-F-	5310-540-8119	WASHER, FLAT: ..... MS 15795-305 (96906)	EA	6	*	*	*	*	*	*	*		3	14
P-F-	5910-209-6243	COUNTER CHASSIS ASSEMBLY-BOTTOM VIEW CAPACITOR ASSEMBLY ..... 8426929 (19204)	EA	2	*	*	*	*	*	*	*		4	1
P-F-	5910-754-6695	CAPACITOR, FIXED, ELECTROLYTIC: 1 SECTION 150..... V DC WORKING VOLTAGE, 50 UF CAPACITANCE, -20 DEG C TO PLUS 85 DEG C WORKING TEMP RANGE, METAL CASE, INSULATED, 13/16 DIA, 1-11/16 LG, TWO UNINSULATED WIRE LEAD TERM., MTG FACILITIES NOT INCLUDED 7545936 (19204)	EA	1	*	*	*	*	*	*	*		4	2
P-F-	5920-660-6705	FUSEHOLDER: EXTRACTOR POST TYPE, ONE CAR-..... TRIDGE, FERRULE TERM., 1/4 LG, 1/4 DIA, PLASTIC BODY, COP OR BR CONTACT ZN-CTD, 2.219 LG, 0.719 DIA, TWO TERM., SOLDER LUG TYPE, MTG X 1/2-24 THD BUSHING, 15/32 LG 7545951 (19204)	EA	1	*	*	*	*	*	*	*		4	3
P-O-	5920-280-4960	FUSE, CARTRIDGE: 2 AMP, 250 V MAX, AC, DC,..... NORMAL INSTANTANEOUS, FERRULE TYPE TER- MINAL. 1/4 DIA, ONETIME 1 1/4 LG, 1/4 DIA MS 90078-11 (96906)	EA	1	*	*	*	*	*	*	*		4	4
P-F-	5905-186-3076	RESISTOR, VARIABLE: 10 OHMS, PORM 10 PERCENT..... TO 1, 25 W, 3 SOLDER LUG TYPE TERM., 1.680 DIA, 1.410 DEEP MS 91427-RP10-2-FD-100-KK (96906)	EA	1	*	*	*	*	*	*	*		4	5
P-F-	5940-283-5280	TERMINAL, LUG: COP., TND-FIN ..... MS 25036-6 (96906)	EA	8	*	*	*	*	*	*	*		4	6
P-F-	5940-5(03-9995	TERMINAL, LUG: COP., TND-FIN., NO. 6 STUD AC-..... COMMODATED, 0.875 LG., 0.238 W, 0.120 H, 0.035 THK MTG PORTION, 1 NO. 22 TO 18 AWG COND, W/ INSULATION SLEEVE MS 25036-1 (96906)	EA	1	*	*	*	*	*	*	*		4	7

Section IV. REPAIR PARTS LIST--Continued

(1) SMR CODE	(2) FEDERAL STOCK NUMBER	(3) DESCRIPTION  REFERENCE NUMBER & MFR. CODE      USABLE ON CODE		(4) UNIT OF MEAS	(5) QTY INC IN UNIT	(6) 30 DAY DS MAINT ALLOWANCE			(7) 30DAY GS MAINT ALLOWANCE			(8) 1-YR ALW PER 100 EQUIP CNTGCY	(9) DEPOT MAINT ALW PER 100 EQUIP	(10) ILLUSTRATION	
						(a)	(b)	(c)	(a)	(b)	(c)			(a)	(b)
						1-20	21-50	51-100	1-20	21-50	51-100			FIGURE NO.	ITEM NO/
P-F-	5940-983-6051	TERMINAL BOARD:.....		EA	1	*	*	*	*	*	*			4	8
P-F-	5310-081-8087	MIL-T-55164 TYPE 37TB10 (81349) NUT, SELF-LOCKING: NM INSERT DSGN TYPE, S, CD-.....		EA	13	*	*	*	*	*	*			4	9
P-F-	5310-045-4007	PLTD W/CHROMATE, NO. 6-32UNC-3B, 5/16 W, 3/16 H MS21044-NO6 (96906)		EA	2	*	*	*	*	*	*			4	10
P-F-	5305-889-3001	WASHER, LOCK: SPLIT LT, S, CD-PLTD.....		EA	4	*	*	*	*	*	*			4	11
P-F-	5940-644-8713	W /CHROMATE, NO. 6 SCREW SIZE MS 35338-41 (96906)		EA	2	*	*	*	*	*	*			4	12
P-F-	5940-577-3711	SCREW, MACHINE: S, CD-PLTD, NO.6-32UNC-2A, 5/8 LG.....		EA	2	*	*	*	*	*	*			4	13
P-F-	5935-170-8180	MS 35206-231 (96906)		EA	1	*	*	*	*	*	*			4	14
P-F-	5305-889-3000	TERMINAL, LUG: CRIMP STYLE, INS, COP., TND-FIN., .....		EA	12	*	*	*	*	*	*			4	15
M-F-	5935-259-1818	14 AWG TO 16 AWPG, HOLE FOR NO. 10 SCREW MS 25036-8 (96906)		EA	3	*	*	*	*	*	*			4	16
P-F-	6145-834-6953	TERMINAL, LUG:.....		EA	1	*	*	*	*	*	*			4	17
P-F-	5325-959-2089	MS 25036-3 (96906)		EA	1	*	*	*	*	*	*			4	18
P-F-	5950-209-6246	CONNECTOR, RECEPTACLE, ELECTRICAL:.....		EA	1	*	*	*	*	*	*			4	19
P-F-	5950-209-6246	BR15352 (74545)		EA	1	*	*	*	*	*	*			4	20
P-F-	5950-209-6246	SCREW, MACHINE: S, CD-PLTD W/CHROMATE-FIN.,.....		EA	1	*	*	*	*	*	*			4	20
P-F-	5950-209-6246	NO. 6-32NC-2A, 0.500 LG MS 35206-230 (96906)		EA	1	*	*	*	*	*	*			4	20
P-F-	5950-209-6246	CLIP, CABLE.....		EA	1	*	*	*	*	*	*			4	20
P-F-	5950-209-6246	MS 25281-9 (96906)		EA	1	*	*	*	*	*	*			4	20
P-F-	5950-209-6246	CONNECTOR, PLUG, ELECTRICAL: 2 MALE CON-.....		EA	1	*	*	*	*	*	*			4	20
P-F-	5950-209-6246	TACTS, SIGHT TYPE, 15 AMP, 125 V, W / CORD GRIPS, 1.437 W, 1.500 LG 7545990 (19204)		EA	1	*	*	*	*	*	*			4	20
P-F-	5950-209-6246	CABLE, POWER, ELECTRICAL: COP., TND-FIN.....		EA	1	*	*	*	*	*	*			4	20
P-F-	5950-209-6246	STRANDED, 2 COND, NO. 14 AWG, 41 STRANDS OF NO. 30 AWG EACH COND, 600 V MAX WORKING VOLTAGE, 0.555 OD, CONDUCTORS RU COVERED, CABLE PLSTC COVERED 7546027 (18877)		EA	1	*	*	*	*	*	*			4	20
P-F-	5950-209-6246	GROMMET, RUBBER: SYN-RU, OIL AND COOLANT.....		EA	1	*	*	*	*	*	*			4	20
P-F-	5950-209-6246	RESISTANT, 5/8 ID, 1 1/8 OD, 5/16 O/A H MS 35490-17 (96906)		EA	1	*	*	*	*	*	*			4	20
P-F-	5950-209-6246	TRANSFORMER ASSEMBLY: .....		EA	1	*	*	*	*	*	*			4	20
P-F-	5950-209-6246	8426948 (19204)		EA	1	*	*	*	*	*	*			4	20

Section IV. REPAIR PARTS LIST--Continued

(1) SMR CODE	(2) FEDERAL STOCK NUMBER	(3) DESCRIPTION  REFERENCE NUMBER & MFR. CODE      USABLE ON CODE		(4) UNIT OF MEAS	(5) QTY INC IN UNIT	(6) 30 DAY DS MAINT ALLOWANCE			(7) 30DAY GS MAINT ALLOWANCE			(8) 1-YR ALW PER 100 EQUIP CNTGCTY	(9) DEPOT MAINT ALW PER 100 EQUIP	(10) ILLUSTRATION	
						(a)	(b)	(c)	(a)	(b)	(c)			(a)	(b)
						1-20	21-50	51-100	1-20	21-50	51-100			FIGURE NO.	ITEM NO/
P-F-	5905-209-6245	RESISTOR, FIXED, WIRE WOUND: .....		EA	1	*	*	*	*	*	*			4	21
P-F-	6920-209-6242	8426947 (19204) RECTIFIER ASSEMBLY: COUNTER CHASSIS.....		EA	1	*	*	*	*	*	*			4	22
P-F-	5305-984-6222	8426928 (19204) SCREW, MACHINE: S, CD-PLTD W / CHROMATE, NO.6-.....		EA	1	*	*	*	*	*	*			4	23
P-F-	5305-059-4553	32NC-2A, 1.250 LG MS 35206-235 (96906) SCREW, MACHINE: FL-CK-HD (80-82 DEG), S, CD-PLTD.....		EA	4	*	*	*	*	*	*			4	24
P-F-	5340-239-0917	NO. 6-32UNC-2A, 1/2 LG MS 35190-238 (96906) HANDLE BOW: .....		EA	1	*	*	*	*	*	*			4	25
P-F-	5325-754-2240	7545950 (19204) GROMMET, RUBBER: SYN-RU, 3/8 HOLE DIA, 5/16.....		EA	2	*	*	*	*	*	*			4	26
P-F-	5930-655-1575	O/A H, 5/8 GROOVED OD, 1/16 GROOVED W MS 35490-11 (96906) SWITCH, TOGGLE: DPDT, 3 POSITION, 1.025 MAX W,.....		EA	1	*	*	*	*	*	*			4	27
P-F-	5355-619-3835	1 1/4 MAX DEEP, 1.346 MAX LG, 6 SCREW TYPE TERMINALS: BUSHING MTD MS 35059-22 (96906) KNOB: RD SHAPE SETSCREW TYPE, PLSTC BODY,.....		EA	1	*	*	*	*	*	*			4	28
P-F-	5305-889-3000	0.906 DIA, 0.640 THK, 0.252 SHAFT DIA, W/SKIRT, 0.730 DP SHAFT HDLE MS 91528-202B (96906) FLASHER CHASSIS ASSEMBLY-TOP VIEW SCREW, MACHINE: S, CD-PLTD W/CHROMATE-FIN,.....		EA	16	*	*	*	*	*	*			5	1
P-F-	6220-678-1731	NO. 6-32NC-2A, 0.500 LG MS 35206-230 (96906) LIGHT, PANEL: .....		EA	2	*	*	*	*	*	*			5	2
P-O-	6240-155-7836	7545957 (19204) LAMP, INCANDESCENT: 28 V, 0.04 AMP CURRENT.....		EA	2	*	*	*	*	*	*			5	3
P-F-	6920-862-6945	DESIGN, MIDGET FLANGE BASE, T-1-3/4 CLEAR BULB, WHT LT OMITTED, TUNG FIL, 5/8 O/A LG MS 25237-327 (96906) TIMER, REPEAT CYCLE:.....		EA	1	*	*	*	*	*	*			5	4
		7545967 (18877)													

Section IV. REPAIR PARTS LIST--Continued

(1) SMR CODE	(2) FEDERAL STOCK NUMBER	(3) DESCRIPTION  REFERENCE NUMBER & MFR. CODE      USABLE ON CODE		(4) UNIT OF MEAS	(5) QTY INC IN UNIT	(6) 30 DAY DS MAINT ALLOWANCE			(7) 30DAY GS MAINT ALLOWANCE			(8) 1-YR ALW PER 100 EQUIP CNTGCY	(9) DEPOT MAINT ALW PER 100 EQUIP	(10) ILLUSTRATION	
						(a)	(b)	(c)	(a)	(b)	(c)			(a)	(b)
						1-20	21-50	51-100	1-20	21-50	51-100			FIGURE NO.	ITEM NO/
P-F-	6105-710-5554	MOTOR, DIRECT CURRENT: PERMANENT MAGNET ..... TYPE, 28 V, 0.075 AMP, 2500 RPM, CLOSED FRAME. SPUR GEAR SHAFT TYPE POWER TAKE OFF, FIXED BASE MTG HOLES 7546033 (19204)		EA	1	*	*	*	*	*	*	*		5	5
P-F-	5910-690-2731	CAPACITOR, ELECTROLYTIC:..... 7545958 (18877)		EA	2	*	*	*	*	*	*	*		5	6
P-F-	5325-276-6091	GROMMET, RUBBER: SYN-RU, 11/16 ID, 1-5, 16 OD. 3/8 ..... O/AH, 1/16 W MTG GROOVE, 1 OD OF GROOVE MS 35489-19 (96906)		EA	1	*	*	*	*	*	*	*		5	7
P-F-	5950-209-6247	TRANSFORMER ASSEMBLY: ..... 8426951 (19204)		EA	1	*	*	*	*	*	*	*		5	8
P-F-	5310-081-8087	NUT, SELF-LOCKING: NM INSERT DSGN TYPE, S, CD-..... PLTD W/CHROMATE, NO. 6-32UNC-3B, 5/16 W, 3/16 H MS 21044-N06 (96906)		EA	19	*	*	*	*	*	*	*		5	9
P-F-	5310-045-4007	WASHER, LOCK: SPLIT, LT, S, CD-PLTD ..... W /CHROMATE, NO. 6 SCREW SIZE MS 35338-41 (96906)		EA	11	*	*	*	*	*	*	*		5	10
P-F-	6130-295-0633	RECTIFIER, METALLIC: MINIATURE TYPE, 1-9/32 LG,..... 1-13/64 W, 1 THK 7545935 (18877)		EA	3	*	*	*	*	*	*	*		5	11
P-F-	5305-477-0187	SCREW MACHINE: S, CD-PLTD, NO. 6-32UNC-2A, 3 1/2 ..... LG 7545992 (19204)		EA	1	*	*	*	*	*	*	*		5	12
P-F-	5305-984-4984	SCREW, MACHINE: PAN-HD, CROSS RECESS, S, CD-..... PLTD W/CHROMATE, NO. 6-32UNC-2A, 5/16 LG MS 35206-227 (96906)		EA	2	*	*	*	*	*	*	*		5	13
X1		BRACKET, MOUNTING, RECTIFIER..... 7545960 (19204)			1									5	14
P-F-	5935-780-4338	CONNECTOR, RECEPTACLE, ELECTRICAL: KIT IN-..... DICATOR ASSY 7546174 (19204)		EA	1	*	*	*	*	*	*	*		5	15
P-F-	5310-209-0788	WASHER, LOCK:..... MS35335-30 (96906)		EA	1	*	*	*	*	*	*	*		5	16
P-F-	5310-540-8119	WASHER, FLAT: ..... MS 15795-305 (96906)		EA	5	*	*	*	*	*	*	*		5	17

Section IV. REPAIR PARTS LIST--Continued

(1) SMR CODE	(2) FEDERAL STOCK NUMBER	(3) DESCRIPTION  REFERENCE NUMBER & MFR. CODE      USABLE ON CODE		(4) UNIT OF MEAS	(5) QTY INC IN UNIT	(6) 30 DAY DS MAINT ALLOWANCE			(7) 30DAY GS MAINT ALLOWANCE			(8) 1-YR ALW PER 100 EQUIP CNTG CY	(9) DEPOT MAINT ALW PER 100 EQUIP	(10) ILLUSTRATION	
						(a)	(b)	(c)	(a)	(b)	(c)			(a)	(b)
						1-20	21-50	51-100	1-20	21-50	51-100			FIGURE NO.	ITEM NO/
P-F-	6920-780-4334	FLASHER CHASSIS ASSEMBLY-BOTTOM VIEW RESISTOR, FIXED: FLASHER ASSY .....		EA	1	*	*	*	*	*	*			6	1
P-F-	5355-619-3835	8432319 (19204) KNOB: RD SHAPE SETSCREW TYPE, PLSTC BODY, .....		EA	1	*	*	*	*	*	*			6	2
P-F-	5920-660-6705	0.906 DIA, 0.640 THK, 0.252 SHAFT DIA, W/SKIRT, 0.730 DP SHAFT HOLE MS 91528-202B (96906) FUSEHOLDER: EXTRACTOR POST TYPE, ONE CAR- .....		EA	1	*	*	*	*	*	*			6	3
P-O-	5920-280-4960	TRIDGE, FERRULE TERM., 1 1/4 LG, 1/4 DIA, PLASTIC BODY, COP OR BR CONTACT ZN-CTD, 2.219 LG, 0.719 DIA, TWO TERM., SOLDER LUG TYPE, MTG X 1/2-24 THD BUSHING, 15/32 LG 7545951 (19204) FUSE, CARTRIDGE: 2 AMP, 250 V MAX. AC, DC, .....		EA	1	*	*	*	*	*	*			6	4
P-F-	5930-655-1575	NORMAL INSTANTANEOUS, FERRULE TYPE TER- MINAL. 1/4 DIA, ONE TIME 1 1/4 LG, 1/4 DIA MS 90078-11 (96906) SWITCH, TOGGLE: DPDT. 3 POSITION, 1.025 MAX W, .....		EA	1	*	*	*	*	*	*			6	5
P-F-	5930-615-9376	I 1/4 MAX DEEP, 1.346 MAX LG, 6 SCREW TYPE TERMINALS, BUSHING MTD MS 35059-22 (96906) SWITCH, TOGGLE: DPDT, 1.025 W, 1.125 H, 1.346 LG, .....		EA	15	*	*	*	*	*	*			6	6
P-F-	5940-534-0970	SIX SCREW TYPE TERM. W/BUSHING MS 35059-21 (96906) TERMINAL, LUG: COP., TND-FIN., SIZE 10 14 AWG TO .....		EA	2	*	*	*	*	*	*			6	7
P-F-	6145-834-6953	NO. 16 AWG, HOLE FOR NO. 10 SCREW SOLDERLESS, INS. MS 25036-7 (96906) CABLE, POWER, ELECTRICAL: COP., TND-FIN., .....		EA	V	*	*	*	*	*	*			6	8
P-F-	5325-959-2089	STRANDED, 2 COND, NO. 14 AWG, 41 STRANDS OF NO. 30 AWG EACH COND, 600 V MAX WORKING VOLTAGE, 0.555 OD, CONDUCTORS RU COVERED, CABLE PLSTC COVERED 7546027 (18877) GROMMET, RUBBER: SYN-RU, OIL AND COOLANT .....		EA	1	*	*	*	*	*	*			6	9
		RESISTANT, 5/8 ID, 1 1/8 OD, 5/16 O/A H MS 35490-17 (96906)													

Section IV. REPAIR PARTS LIST-Continued

(1) SMR CODE	(2) FEDERAL STOCK NUMBER	(3) DESCRIPTION  REFERENCE NUMBER & MFR. CODE      USABLE ON CODE	(4) UNIT OF MEAS	(5) QTY INC IN UNIT	(6) 30 DAY DS MAINT ALLOWANCE			(7) 30DAY GS MAINT ALLOWANCE			(8) 1-YR ALW PER 100 EQUIP CNTGCTY	(9) DEPOT MAINT ALW PER 100 EQUIP	(10) ILLUSTRATION	
					(a)	(b)	(c)	(a)	(b)	(c)			(a)	(b)
					1-20	21-50	51-100	1-20	21-50	51-100			FIGURE NO.	ITEM NO/
P-O-	5935-259-1818	CONNECTOR, PLUG, ELECTRICAL: 2 MALE CON- TACTS, STGHT TYPE, 15 AMP, 125 V, W/CORD GRIPS, 1.437 W, 1.500 LG 7545990 (19204)	EA	1	*	*	*	*	*	*	*		6	10
P-F	5910-754-6695	CAPACITOR, FIXED, ELECTROLYTIC: 1 SECTION 150 V DC WORKING VOLTAGE, 50 UF CAPACITANCE, -20 DEG C TO PLUS 85 DEG C WORKING TEMP RANGE, METAL CASE, INSULATED, 13/16 DIA, 1-11/16 LG, TWO UNINSULATED WIRE LEAD TERM., MTG FACILITIES NOT INCLUDED 7545936 (19204)	EA	15	*	*	*	*	*	*	*		6	11
P-F-	5940-109-2583	TERMINAL BOARD: BAKELITE, 15 SCREW TYPE, TERM. INCL, BARRIER TYPE 7545953 (19204)	EA	3	*	*	*	*	*	*	*		6	12
P-F-	5310-081-8087	NUT, SELF-LOCKING: NM INSERT DSGN TYPE, S, CD- PLTD W/CHROMATE, NO. 6-32UNC-3B, 5/16 W, 3/16 H MS21044-N06 (96906)	EA	14	*	*	*	*	*	*	*		6	13
P-F-	5310-045-4007	WASHER, LOCK: SPLIT, LT, S, CD-PLTD W/CHROMATE, NO. 6 SCREW SIZE MS 35338-41 (96906)	EA	8	*	*	*	*	*	*	*		6	14
P-F-	5305-889-3000	SCREW, MACHINE: S, CD-PLTD W/CHROMATE-FIN, NO. 6-32NC-2A, 0.500 LG MS 35206-230 (96906)	EA	12	*	*	*	*	*	*	*		6	15
P-F-	5305-059-4553	SCREW, MACHINE: FL-CK-HD (80-82 DEG), S, CD- PLTD, NO. 6-32UNC-2A, 1/2 LG MS 35190-238 (96906)	EA	2	*	*	*	*	*	*	*		6	16
P-F-	5340-239-0917	HANDLE BOW: 7545950 (19204)	EA	1	*	*	*	*	*	*	*		6	17
P-F-	5905-209-6244	RESISTOR, FIXED, WIRE WOUND: 8426946 (19204)	EA	1	*	*	*	*	*	*	*		6	18
P-F-	5325-754-2240	GROMMET, RUBBER: SYN-RU, 3/8 HOLE DIA, 5/16 O/A H, 5/8 GROOVED, OD 1/16 GROOVED W MS 35490-11 (96906)	EA	3	*	*	*	*	*	*	*		6	19
P-F-	0920-861-3835	TERMINAL BOX ASSEMBLY TERMINAL BOX ASSEMBLY..... 7545996 (18877)	EA	1	*	*	*	*	*	*	*		7	



Section IV. REPAIR PARTS LIST--Continued

(1) SMR CODE	(2) FEDERAL STOCK NUMBER	(3) DESCRIPTION  REFERENCE NUMBER & MFR. CODE      USABLE ON CODE		(4) UNIT OF MEAS	(5) QTY INC IN UNIT	(6) 30 DAY DS MAINT ALLOWANCE			(7) 30DAY GS MAINT ALLOWANCE			(8) 1-YR ALW PER 100 EQUIP CNTGCT	(9) DEPOT MAINT ALW PER 100 EQUIP	(10) ILLUSTRATION	
						(a)	(b)	(c)	(a)	(b)	(c)			(a)	(b)
						1-20	21-50	51-100	1-20	21-50	51-100			FIGURE NO.	ITEM NO/
P-F-	5940-503-9995	TERMINAL, LUG: COP., TND-FIN., NO. 6 STUD AC-..... COMMODATED, 0.875 LG, 0.238 W, 0.120 H, 0.0353 THK MTG; PORTION, 1 NO. 22 TO 18 AWG COND, W / IN- SULATION SLEEVE MS 25036-1 (96906)		EA	16	*	*	*	*	*	*	*		7	1
P-F-	5940-109-2583	TERMINAL BOARD: BAKELITE, 15 SCREW TYPE,..... TERM INCL, BARRIER TYPE 7545953 (19204)		EA	4	*	*	*	*	*	*	*		7	2
P-F-	5310-934-9761	NUT, PLAIN, HEXAGON:..... MS 35649-264 (96906)		EA	16	*	*	*	*	*	*	*		7	3
P-F-	5310-043-1754	WASHER, LOCK: SPLIT, HELICAL, RING LKG, CRES, ..... PASS-FIN., 0.239 OD, 0.031 THK, NO. 6 BOLT SIZE MS 35337-79 (96906)		EA	16	*	*	*	*	*	*	*		7	4
P-F-	5305-889-3001	SCREW, MACHINE: S, CD-PLTD, NO. 6-32UNC-2A, 5/8 LG..... MS 35206-231		EA	16	*	*	*	*	*	*	*		7	5
P-F-	6920-802-4759	CABLE, ASSEMBLY, SPECIAL PURPOSE, ELECTRICAL:..... 7546007 (18877)		EA	2	*	*	*	*	*	*	*		7	6
P-O	6920-070-5666	JUMPER ASSEMBLY, TERMINAL BOX:..... 75460072 (19204)		EA	15	*	*	*	*	*	*	*		7	7
TARGET HOLDER ASSEMBLY															
P-F-	6920-780-4335	HOLDER ASSEMBLY, TARGET: ..... 7540153 (19204)		EA	15	*	*	*	*	*	*	*		8	
X1--		PLATE, FRONT ..... 7546064 (19204)			1									8	1
X1--		PLATE, BACK ..... 7546063 (19204)			1									8	2
P-O-	5310-828-8189	NUT PLAIN, WING: S, CD PLTD W/CHROMATE,..... 5/16-18UNC-2B, 1-17/32 W, 5/8 THK, 1.243 O/A W, 0.635 O/A H MS 35425-41 (96906)		EA	3	*	*	*	*	*	*	*		8	3
P-F-	5310-543-2870	WASHER, FLAT: CRES, PASS-FIN., 13/32 ID, 13/16 OD,..... 0.065 THK, 3/8 SCREW SIZE MS 27183-13 (96906)		EA	4	*	*	*	*	*	*	*		8	4
P-F-	5306-721-5944	BOLT, SQUARE NECK: (CARRIAGE BOLT), RD-HD, S,..... CD-OR ZN-CHROMATE-FIN., 5/16-18UNC-2A, 1 LG MS 35751-41 (96906)		EA	30	*	*	*	*	*	*	*		8	5

Section IV. REPAIR PARTS LIST--Continued

(1) SMR CODE	(2) FEDERAL STOCK NUMBER	(3) DESCRIPTION  REFERENCE NUMBER & MFR. CODE      USABLE ON CODE		(4) UNIT OF MEAS	(5) QTY INC IN UNIT	(6) 30 DAY DS MAINT ALLOWANCE			(7) 30DAY GS MAINT ALLOWANCE			(8) 1-YR ALW PER 100 EQUIP CNTGCT	(9) DEPOT MAINT ALW PER 100 EQUIP	(10) ILLUSTRATION	
						(a)	(b)	(c)	(a)	(b)	(c)			(a)	(b)
						1-20	21-50	51-100	1-20	21-50	51-100			FIGURE NO.	ITEM NO/
P-F-	5306-685-7790	BOLT, SQUARE NECK: S, CD-OR ZN-PLTD..... W/CROMATE, 5/16-18UNC-2A, 2 1/4 LG MS 37511-46 (96906)		EA	15	*	*	*	*	*	*			8	6
P-F-	6020-475-3734	BLOCK, WOOD: 1 SQ, 8 1/2 LG..... 7546061 (18877)		EA	15	*	*	*	*	*	*			8	7
P-F-	5310-880-7744	NUT, PLAIN, HEXAGON: S, CD- ZN-CHROMATE-..... FIN., 5/16-18UNC-2B, 1/2 W, 17/64 THK MS 51967-5 (96906)		EA	15	*	*	*	*	*	*			8	8
P-F-	5305-984-5681	SCREW, MACHINE: S, CD-PLTD W/CHROMATE, 5/16-..... 18UNC-2A., 1 3/4 LG MS 35206-301 (96906)		EA	1	*	*	*	*	*	*			8	9
P-F-	5305-942-2169	HIT SWITCH ASSEMBLY SCREW, MACHINE: S, NO. 6-32NC-2A, 1 LG..... MS 35/275-235 (96906)		EA	2	*	*	*	*	*	*			9	1
P-F-	5305-984-6222	SCREW, MACHINE: S, CD-PLTD W/CHROMATE, NO. 6-..... 32NC-2A, 1.250 LG MS 35206-235 (96906)		EA	1	*	*	*	*	*	*			9	2
P-F-	5310-045-4007	WASHER, LOCK: SPLIT, LT, S, CD-PLTD..... W/CHROMATE, NO. 6 SCREW SIZE MS 35338-41 (96906)		EA	8	*	*	*	*	*	*			9	3
P-F-	5310-934-9761	NUT, PLAIN, HEXAGON:..... MS 35649-264 (96906)		EA	4	*	*	*	*	*	*			9	4
P-F-	5930-607-2710	SWITCH, SENSITIVE: SPST, AC 5 AMP RESISTINE..... CURRENT RATING, DC 2 AMP RESISTINE CURRENT RATING, TWO TERMINAL LUGS 8410714 (19204)		EA	2	*	*	*	*	*	*			9	5
P-F-	5340-897-2456	CLAMP, SWITCH: S, 1/4 LOOP ID, 1.125 O/A W, 0.063..... THK 7546141 (19204)		EA	2	*	*	*	*	*	*			9	6
P-F-	5975-370-3996	COVER, SWITCH TERMINAL: PLSTC, 53/64 W, 2-5/ 64..... LG, 4 SLOTS 7546140 (19204)		EA	2	*	*	*	*	*	*			9	7
P-F-	6145-560-5481	CABLE, ELECTRICAL: LOW TENSION INS (PLSTC,..... NATURAL OR SYN-RU) 2 COND (TND-CAP.) STRANDED, NO. 18 AWG, (ORD) (REPLACEMENT FOR CABLE ELECTRICAL 7732849-A AND CABLE ELECTRICAL 7732849-B) MIL-C-13486A (81349).		EA	2	*	*	*	*	*	*			9	8

Section IV. REPAIR PARTS LIST--Continued

(1) SMR CODE	(2) FEDERAL STOCK NUMBER	(3) DESCRIPTION  REFERENCE NUMBER & MFR. CODE      USABLE ON CODE		(4) UNIT OF MEAS	(5) QTY INC IN UNIT	(6) 30 DAY DS MAINT ALLOWANCE			(7) 30DAY GS MAINT ALLOWANCE			(8) 1-YR ALW PER 100 EQUIP CNTGCTY	(9) DEPOT MAINT ALW PER 100 EQUIP	(10) ILLUSTRATION	
						(a)	(b)	(c)	(a)	(b)	(c)			(a)	(b)
						1-20	21-50	51-100	1-20	21-50	51-100			FIGURE NO.	ITEM NO/
M-F-		CABLE, ELECTRICAL, 0.235, DIA, 2 COND, NO. 18 AWG, ..... 13 1/2 LG (MFD) FROM CABLE, ELECTRICAL, FSN 6145- 560-5481) 7732849-A (19204)			1									9	8
M-F-		CABLE, ELECTRICAL, 0.235 DIA. 2 COND, NO. 18 ..... AWG, 24 LG (MFD FROM CABLE, ELECTRICAL, FSN 6145-560-5481) 7732849-B (19204)			1									9	8
P-O-	5935-259-1818	CONNECTOR, PLUG, ELECTRICAL: 2 MALE CON-..... TACTS, SIGHT TYPE, 15 AMP, 125 V, W/CORD GRIPS 1.437 W, 1.500 LG 7545990 (19204)		EA	16	*	*	*	*	*	*	*		9	9
P-F-	6920 -868-8065	UTILITY BOX ASSEMBLY BOX, UTILITY ASSEMBLY: ..... 8427032 (19204)		EA	15	*	*	*	*	*	*	*		10	
P-O-	6210-850-6897	TARGET INDICATOR LIGHT LIGHT, INDICATOR: AMBER LENS, TWO SOLDER LUG..... TYPE TERM., 125 V, 1.125 O/A DIA,2.671 O/A LG MS 90286-LH61FA2 (96906)		EA	15	*	*	*	*	*	*	*		11	1
P-O-	6240-155-7926	LAMP, INCANDESCENT: CANDELABRA-BAYONET ..... BASE, DBL CONTACT, 24-28 V, TUNG FIL, CLR, WHT LT MS 15613-2 (96906)		EA	15	*	*	*	*	*	*	*		11	2

Section V. SPECIAL TOOLS LIST

(1) SMR CODE	(2) FEDERAL STOCK NUMBER	(3) DESCRIPTION  REFERENCE NUMBER & MFR. CODE      USABLE ON CODE		(4) UNIT OF MEAS	(5) QTY INC IN UNIT	(6) 30 DAY DS MAINT ALLOWANCE			(7) 30DAY GS MAINT ALLOWANCE			(8) 1-YR ALW PER 100 EQUIP CNTGCV	(9) DEPOT MAINT ALW PER 100 EQUIP	(10) ILLUSTRATION	
						(a)	(b)	(c)	(a)	(b)	(c)			(a)	(b)
						1-20	21-50	51-100	1-20	21-50	51-100			FIGURE NO.	ITEM NO/
		SHOP SET, SMALL ARMS: FIELD MAINTENANCE (FSN 4933-754-0664) (LISTED IN SC 4933-95-CL-A11) TOOL KIT, SMALL ARMS REPAIRMAN: (FSN 4033-357-7770) (LISTED IN SC 4933-95-CL-A07)													

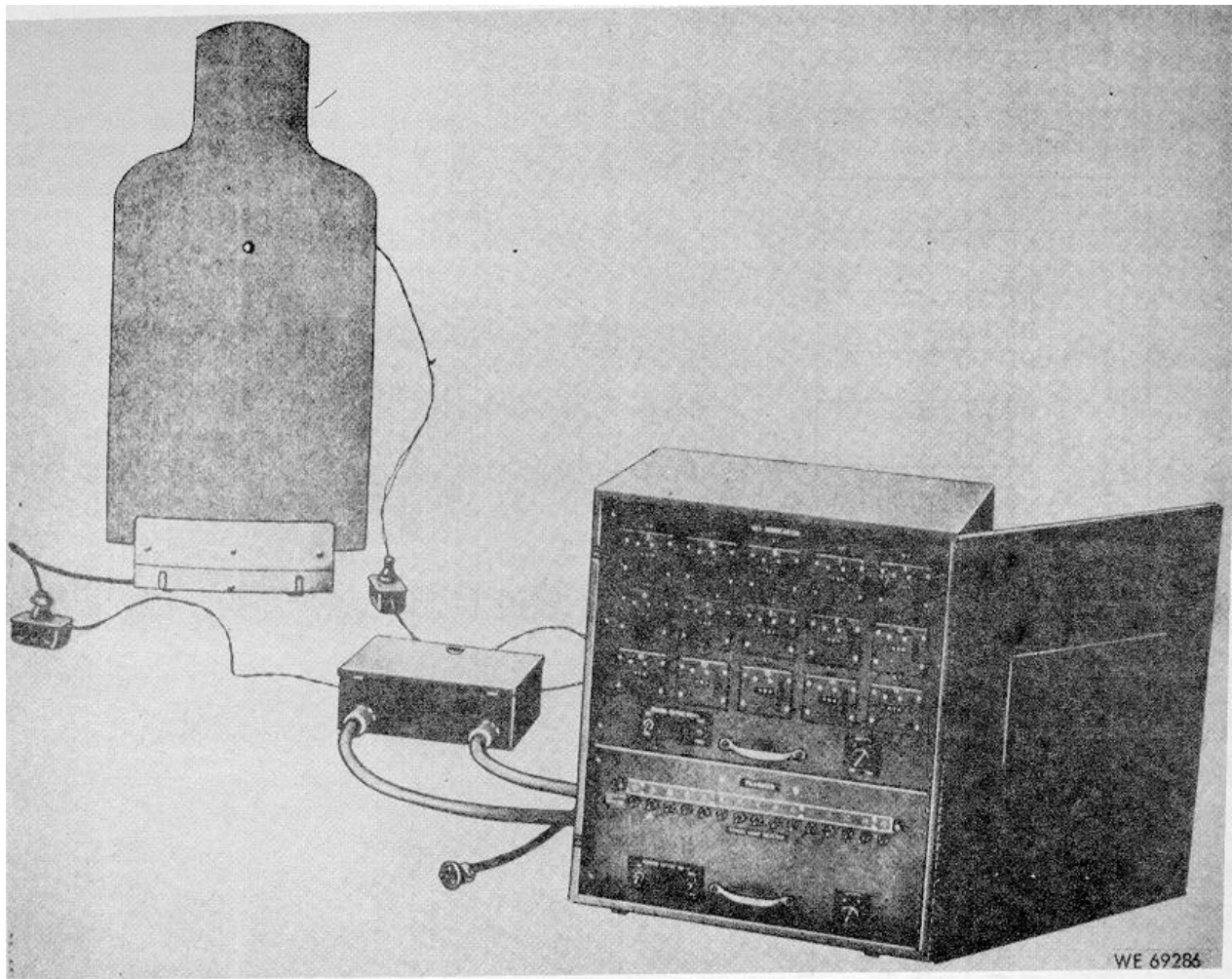


Figure 1. Night firing target mechanism M40-left front view.

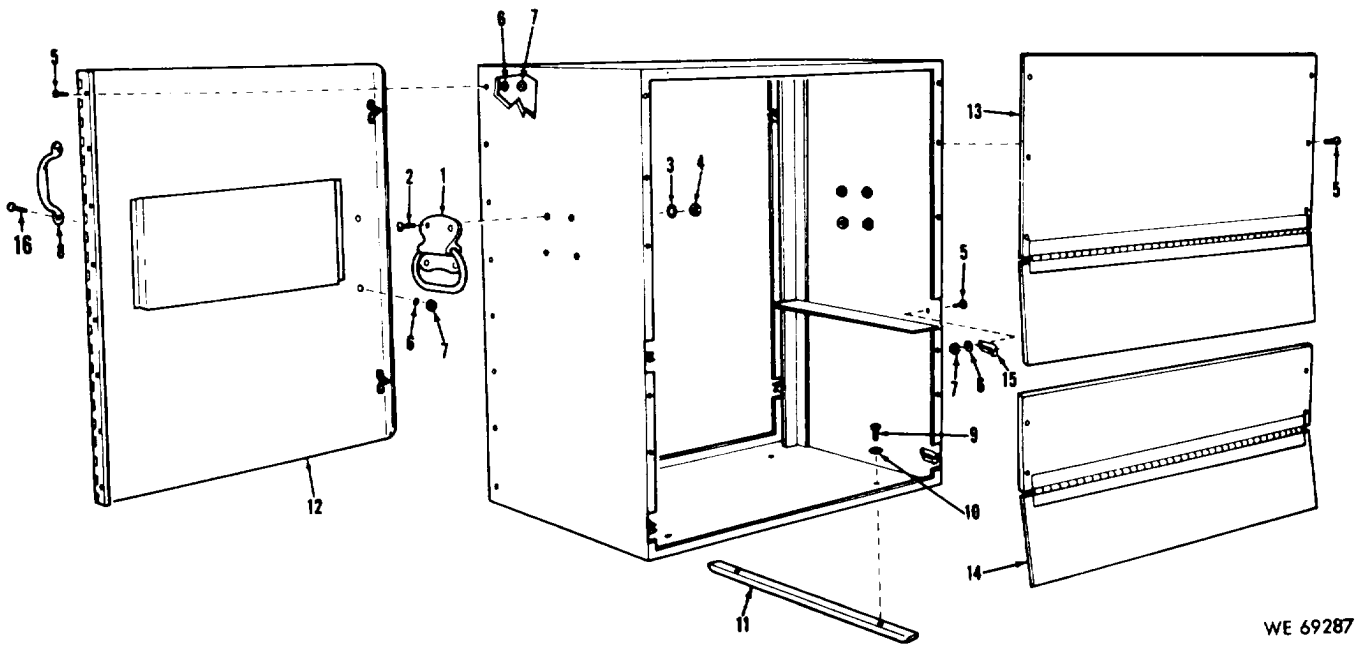
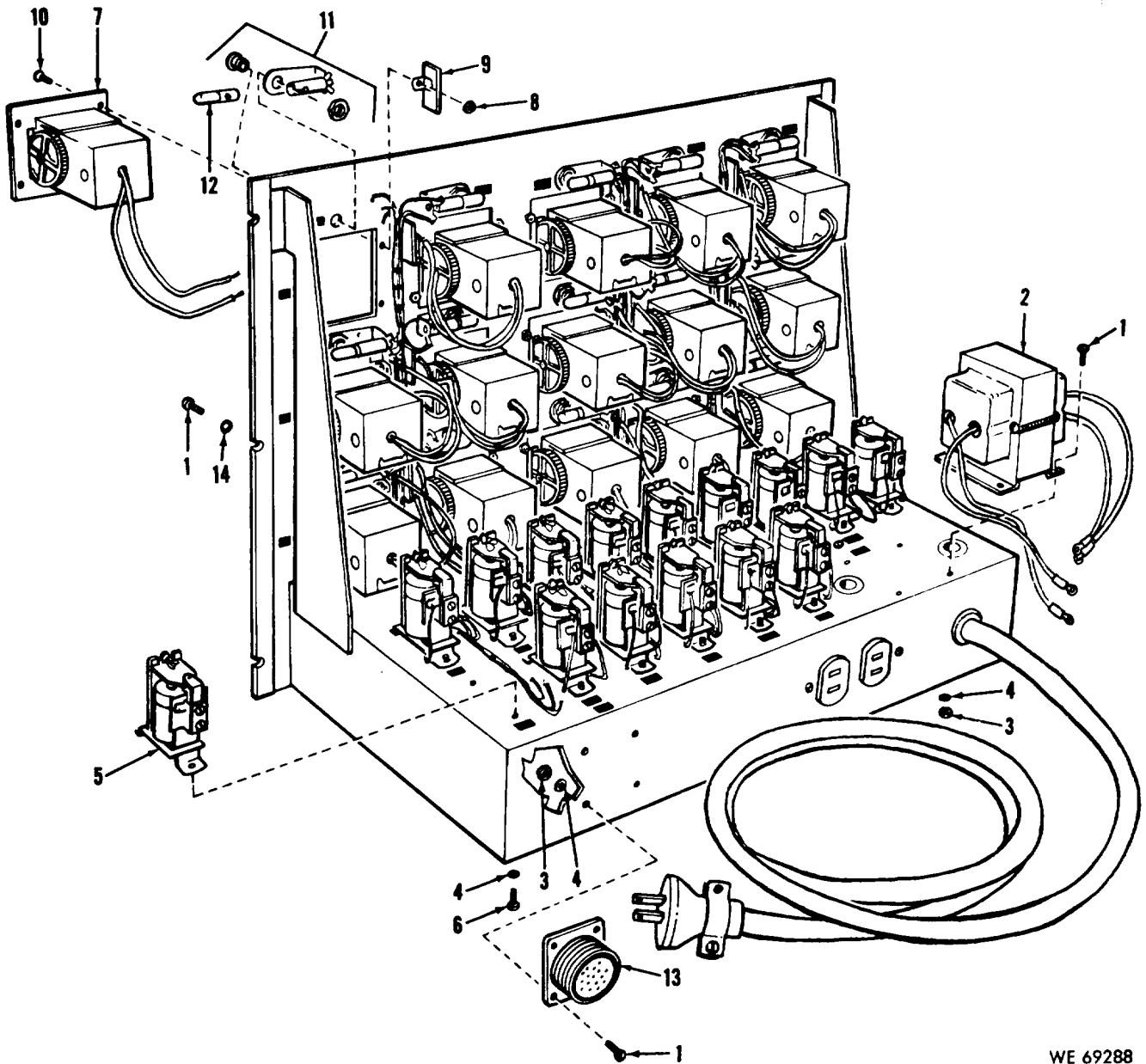
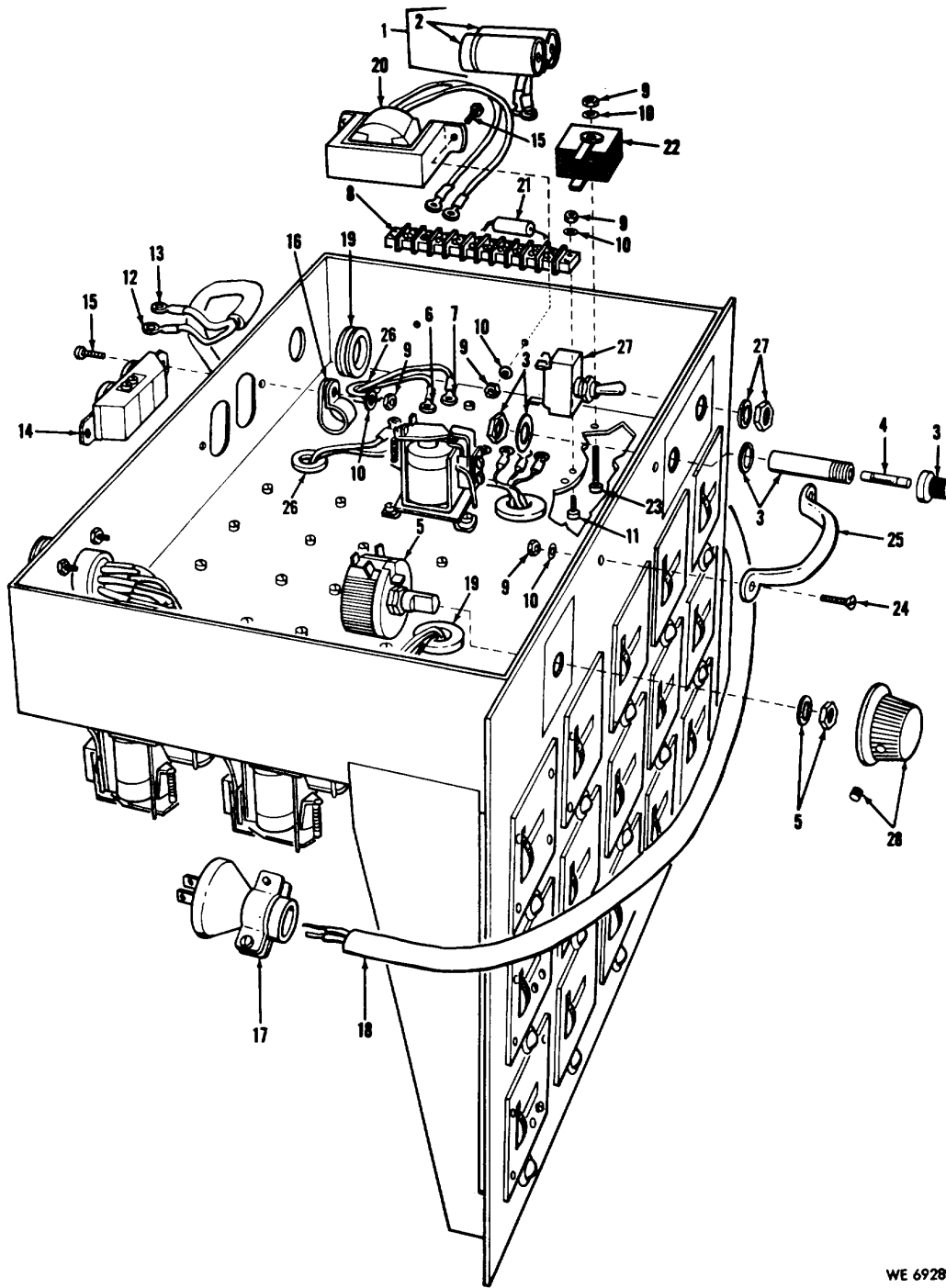


Figure 2. Cabinet assembly-partially exploded view.



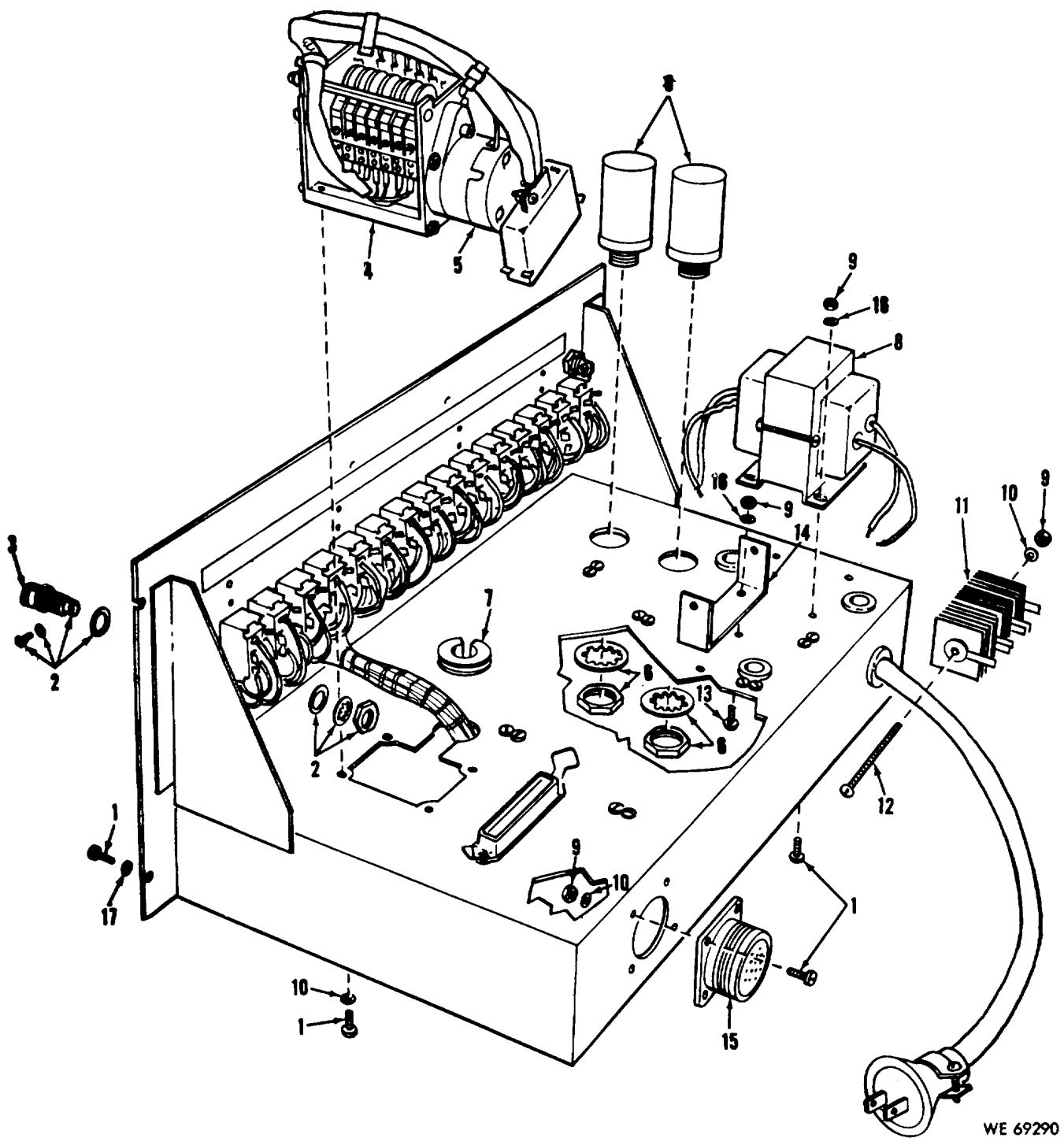
WE 69288

Figure 3. Counter chassis assembly-partially exploded Top view.



WE 69289

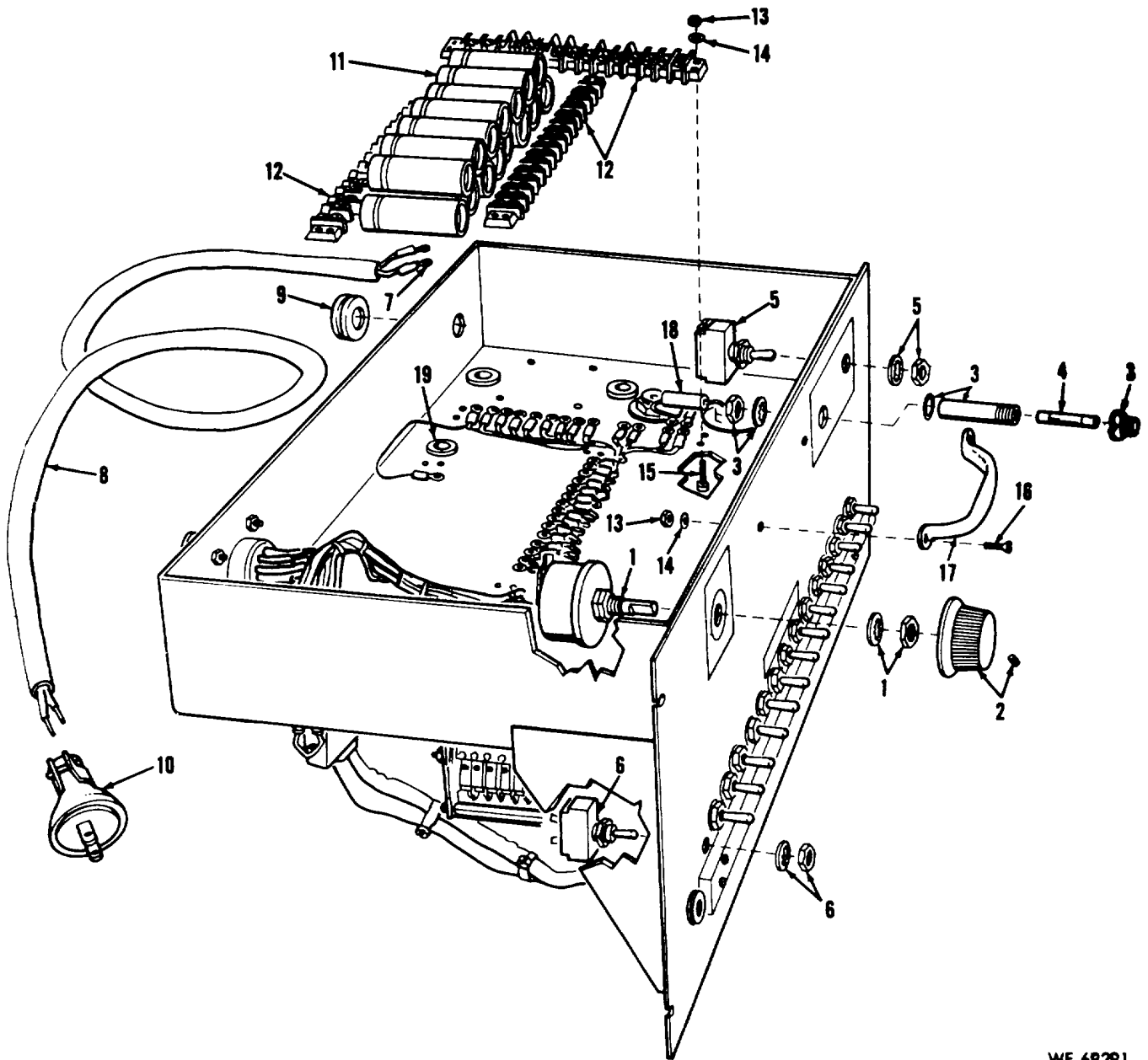
Figure 4. Counter chassis assembly-partially exploded bottom view.



WE 69290

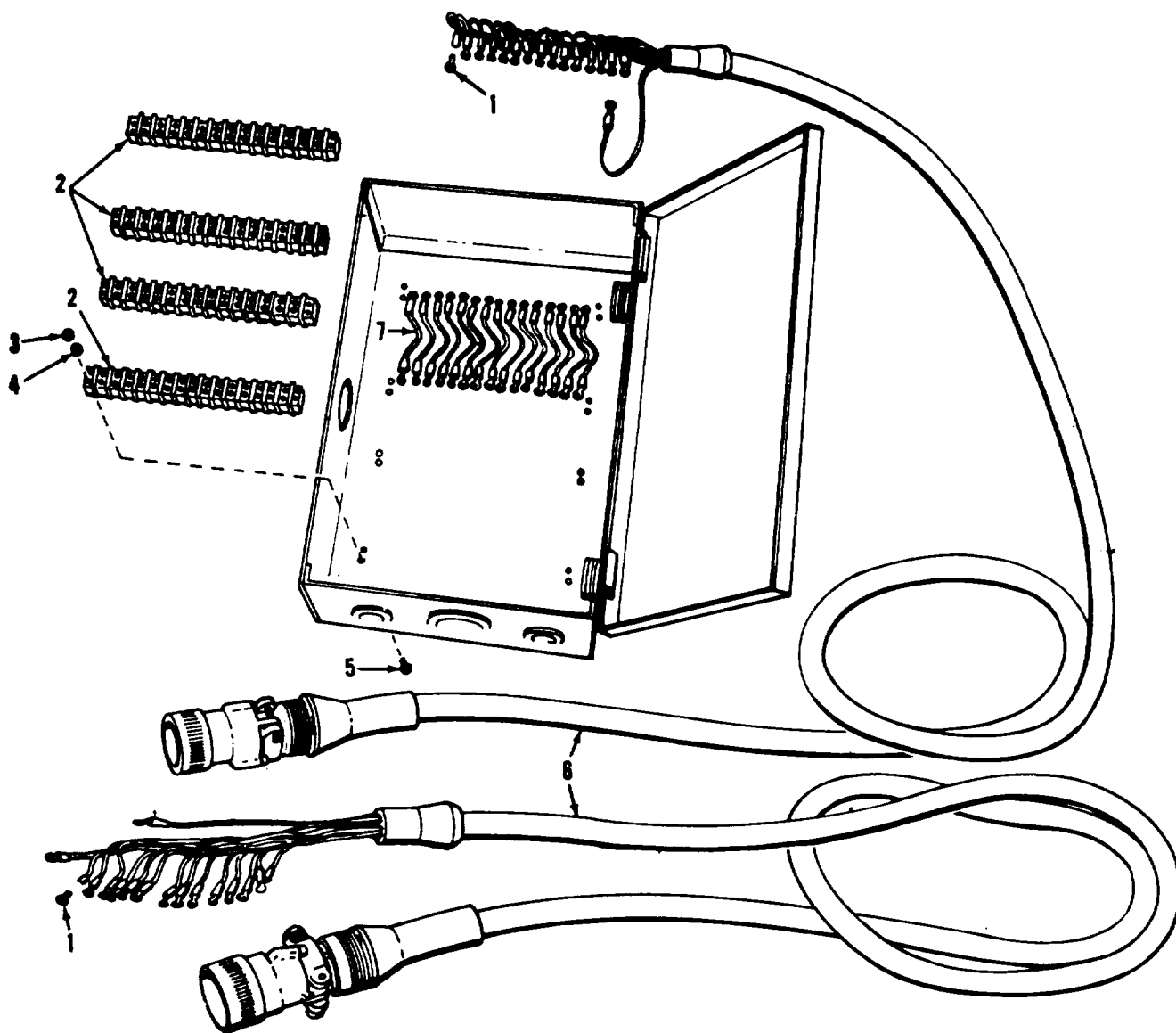
Figure 5. Flasher chassis assembly-partially exploded top view.





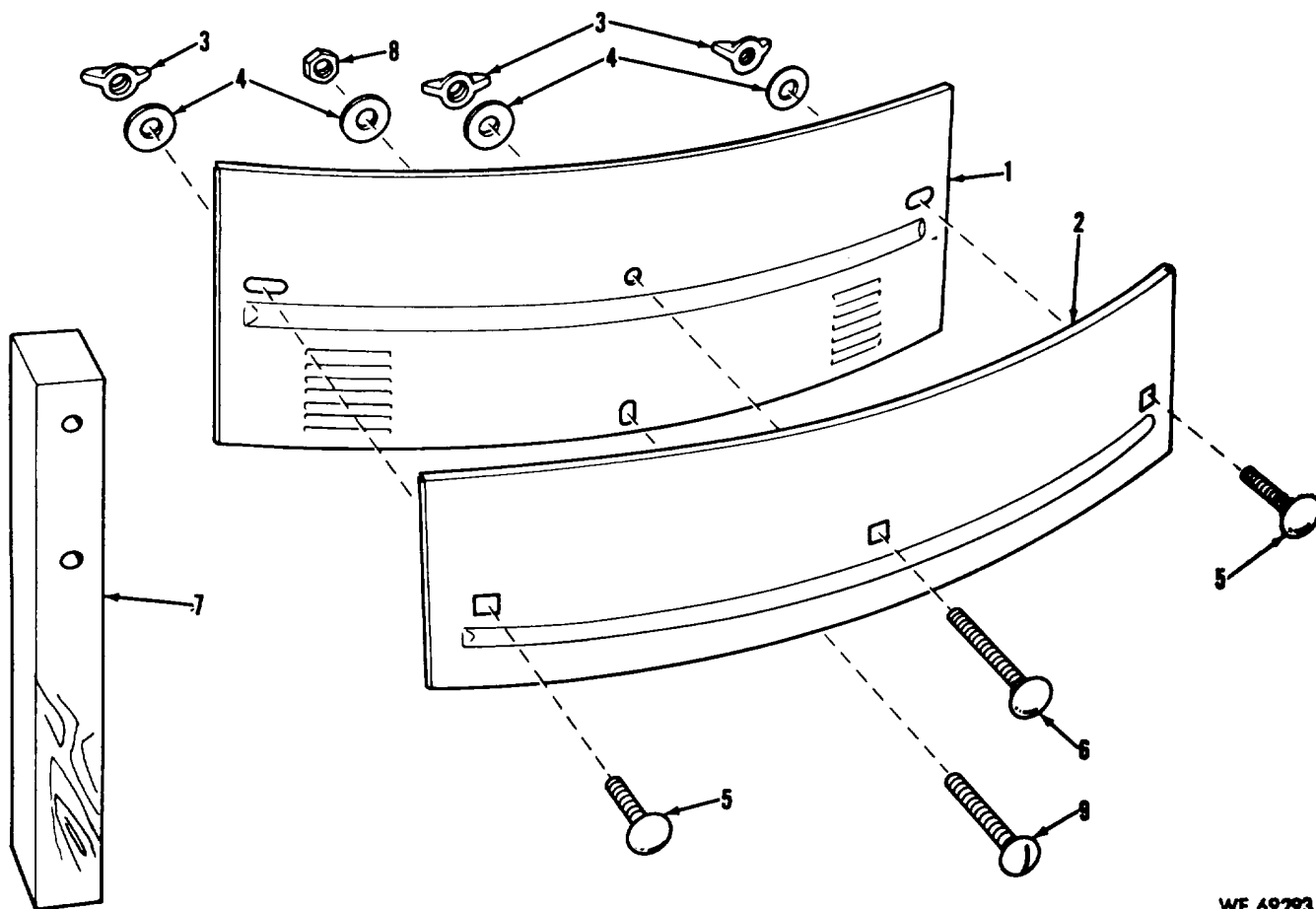
WE 69291

Figure 6. Flasher chassis assembly-partially exploded bottom view.



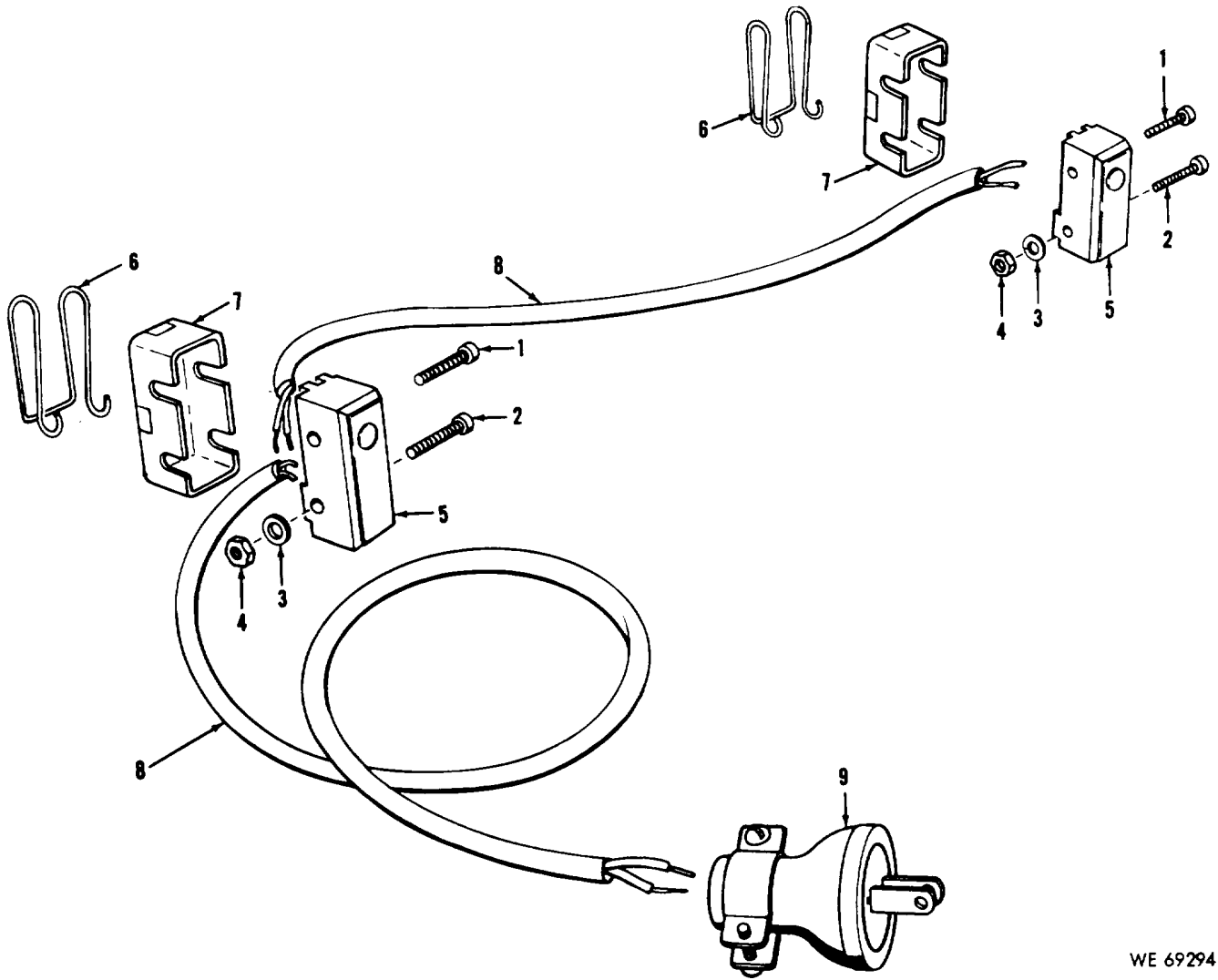
WE 69292

Figure 7. Terminal box assembly-partially exploded view.



WE 69293

Figure 8. Target holder assembly-exploded view.



WE 69294

Figure 9. Hit switch assembly-partially exploded view.

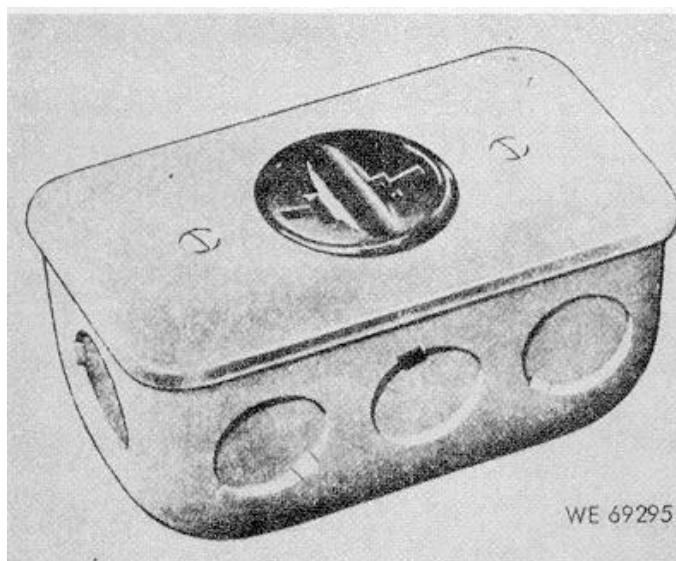


Figure 10. Utility box assembly.

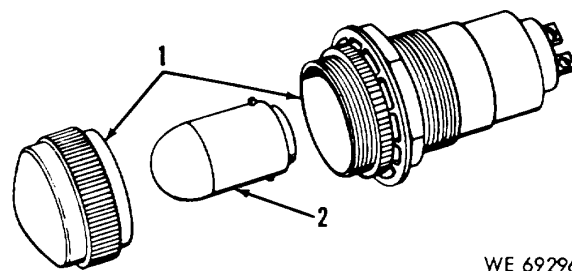


Figure 11. Target indicator light-partially exploded view.

Section VI. FEDERAL STOCK NUMBER AND REFERENCE NUMBER INDEX

STOCK NUMBER	FIG. NO	ITEM NO	STOCK NUMBER	FIG. NO	ITEM NO
5305-059-4553.....	2	16	5905 186-3076.....	4	5
5305-059-4553.....	4	24	5905-209-6244.....	6	18
5305-059-4553.....	6	16	5905-209-6245.....	4	21
5305-688-2021.....	2	9	5910-209-6243.....	4	1
5305-889-3000.....	3	1	5910-690-2731.....	5	6
5305-889-3000.....	4	15	5910-754-6695.....	4	2
5305-889-3000.....	5	1	5910-754-6695.....	6	11
5305-889-3000.....	6	15	5920-280-4960.....	4	4
5305-889-3001.....	7	5	5920-280-4960.....	6	4
5305-889-3001.....	7	5	5920-660-6705.....	4	3
5305-942-2169.....	9	1	5930-607-2710.....	9	5
5305-957-6272.....	2	2	5930-615-9376.....	6	6
5305-984-4984.....	2	5	5930-655-1575.....	4	27
5305-984-4984.....	3	6	5935-170-8180.....	4	14
5305-984-4984.....	5	13	5935-259-1818.....	4	17
5305-984-5681.....	8	9	5935-259-1818.....	6	10
5305-984-5681.....	8	9	5935-259-1818.....	9	9
5305-984-6222.....	4	23	5935-780-4338.....	5	15
5305-984-6222.....	9	2	5940-109-2583.....	6	12
5305-995-6653.....	3	10	5940-192-9962.....	3	9
5306-685-7790.....	8	6	5940-283-5280.....	4	6
5306-721-5944.....	8	5	5940-503-9995.....	4	7
5310-043-1754.....	7	4	5940-534-9995.....	7	1
5310-043-5862.....	2	10	5940-534-0970.....	6	7
5310-045-4007.....	2	6	5940-577-3711.....	4	13
5310-045-4007.....	3	4	5940-644-8713.....	4	12
5310-045-4007.....	4	10	5540-983-6051.....	4	8
5310-045-4007.....	5	10	5945-828-6500.....	3	5
5310-045-4007.....	6	14	5950-209-6246.....	4	20
5310-045-4007.....	9	3	5950-209-6247.....	3	2
5310-081-8087.....	2	7	5950-209-6247.....	5	8
5310-081-8087.....	3	3	5975-370-3966.....	9	7
5310-081-8087.....	4	9	6105-710-5554.....	5	5
5310-081-8087.....	5	9	6130-295-0633.....	5	11
5310-081-8087.....	6	13	6145-560-5481.....	9	8
5310-088-0551.....	3	8	6145-834-6953.....	4	18
5310-209-0788.....	5	16	6145-834-6953.....	6	8
5310-540-8119.....	3	14	6210-299-5148.....	3	11
5310-540-8119.....	5	17	6210-850-6897.....	11	1
5310-543-2870.....	8	4	6220-678-1731.....	5	2
5310-828-8189.....	8	3	6240-155-7836.....	5	3
5310-880-7744.....	8	8	6240-155-7926.....	11	2
5310-933-8121.....	2	3	6240-155-8706.....	3	12
5310-934-9758.....	2	4	6920-070-5666.....	7	7
5310-934-9761.....	7	3	6920-209-6242.....	4	22
5310-934-9761.....	9	4	6920-475-3734.....	8	7
5325-276-6091.....	5	7	6920-646-6943.....	3	7
5325-754-2240.....	4	26	6920-780-4334.....	6	1
5325-754-2240.....	6	19	6920-780-4335.....	8	-
5325-959-2089.....	6	9	6920-861-3835.....	7	-
5340-239-0917.....	2	8	6920-862-4759.....	7	6
5340-239-0917.....	4	25	6920-862-6945.....	5	4
5340-239-0917.....	6	17	6920-868-8065.....	10	-
5340-251-7971.....	2	1			
5340-598-2821.....	2	15			
5340-897-2456.....	9	6			
5355-619-3935.....	4	28			
5355-619-3835.....	6	2			

Section VI. FEDERAL STOCK NUMBER AND REFERENCE NUMBER  
INDEX-Continued

REFERENCE NO.	MFR CODE	FIG. NO.	ITEM NO.	REFERENCE NO.	MFR CODE	FIG. NO.	ITEM NO.
BR15352	74545	4	14	MS 35649	96906	9	4
MIL-T55164 TYPE	81349	9	8	MS 35751-41	96906	8	5
37TB10				MS 35751-46	96906	8	6
MS 15571-2	96906	3	12	MS 35791-1	96906	2	1
MS 15613-2	96906	11	2	MS 51967-5	96906	8	8
MS 15795-305	96906	3	14	MS 90078-11	96906	4	4
MS 15795-305	96906	5	17	MS 90078-11	96906	6	4
MS 21044-NO4	96906	3	8	MS 90286-LH61FA2	96906	11	1
MS21044-NO6	96906	2	7	MS 91427-RP10-2-	96906	4	5
MS 21044-NO6	96906	3	3	FD-100-KK			
MS 21044-NO6	96906	4	9	MS 91528-202B	96906	4	28
MS 21044-NO6	96906	5	9	MS 91528-202B	96906	6	2
MS 21044-NO6	96906	6	13	134272	62983	3	9
MS 25036-1	96906	4	7	710-121	72619	3	11
MS 25036-1	96906	7	1	7545935	18877	2	11
MS 25036-3	96906	4	13	7545936	19204	4	2
MS 25036-6	96906	4	6	7545936	19204	6	11
MS 25036-7	96906	6	7	7545940	18877	3	5
MS 25036-8	96906	4	12	7545950	19204	2	8
MS 25237-327	96906	5	3	7545950	19204	4	25
MS 25281-9	96906	4	13	7545950	19204	6	17
MS 27183-13	96906	8	4	7545951	19204	4	3
MS 35059-21	96906	6	6	7545951	19204	6	3
MS 35059-22	96906	4	27	7545953	19204	6	12
MS 35059-22	96906	6	5	7545953	19204	7	2
MS 35190-222	96906	3	10	7545957	19204	5	2
MS 35190-238	96906	2	16	7545958	18877	5	6
MS 35190-238	96906	4	24	7545960	19204	5	14
MS 35190-238	96906	6	16	7545967	18877	5	4
MS 35190-269	96906	2	2	7545971	19204	2	14
MS 35206-227	96906	2	5	7545974	19204	2	15
MS 35206-227	96906	3	6	7545975	19204	2	13
MS 35206-227	96906	5	13	7545979	19204	2	12
MS 35206-230	96906	3	1	7545990	19204	4	17
MS 35206-230	496906	4	15	7545990	19204	6	10
MS 35206-230	96906	5	1	7545990		9	9
MS 35206-230	96906	6	15	7545992		5	12
MS 35206-231	96906	4	11	7545996	18877	7	-
MS 35206-231	96906	7	5	7546007	18877	7	6
MS 35206-235	96906	4	23	7546027	18877	4	18
MS 35206-235	96906	9	2	7546027	18877	6	8
MS 35206-301	96906	8	9	7546033	19204	5	5
MS 35272-235	96906	9	1	7546061	18877	8	7
MS 35308-1	96906	2	9	7546063	19204	8	2
MS 35335-30	96906	5	16	7546064	19204	8	1
MS 35337-79	96906	7	4	7546140	19204	9	7
MS 35337-82	96906	2	10	7546140	19204	9	7
MS 35338-41	96906	2	6	7546141	19204	9	6
MS 35338-41	96906	3	4	7546153	19204	8	-
MS 35338-41	96906	4	10	7546168	19204	3	7
MS 35338-41	96906	5	10	7546172	19204	7	7
MS 35338-41	96906	6	14	7546174	19204	3	13
MS 35338-41	96906	9	3	7546174	19204	5	15
MS 35338-139	96906	2	3	7546241	19204	2	11
MS 35425-41	96906	8	3	7732849-A	19204	9	8
MS 35489-19	96906	5	7	7732849-B	19204	9	8
MS 35490-11	96906	4	26	8410714	19204	9	5
MS 35490-11	96906	6	19	8426928	19204	4	22
MS 35490-17	96906	4	19	8426929	19204	4	1
MS 35490-17	96906	6	9	8426946	19204	6	18
MS 35649-202	96906	2	4	8426947	19204	4	21
MS 35649-264	96906	7	3	8426948	19204	4	20
				842651	19204	3	2

**Section VI. FEDERAL STOCK NUMBER AND REFERENCE NUMBER  
INDEX-Continued**

<u>REFERENCE NO.</u>	<u>MFR CODE</u>	<u>FIG. NO.</u>	<u>ITEM NO.</u>	<u>REFERENCE NO.</u>	<u>MFR CODE</u>	<u>FIG. NO.</u>	<u>ITEM. NO</u>
8426951.....	19204.....	5.....	8	8432319.....	19204.....	6.....	1
8427032.....	19204.....	10.....	-				



By Order of the Secretary of the Army:

Official:

VERNE L. BOWERS,  
*Major General, United States Army,  
The Adjutant General.*

W. C. WESTMORELAND,  
*General, United States Army,  
Chief of Staff.*

Distribution:

To be distributed in accordance with DA Form 12-40 (qty rqr block No. 160) organizational maintenance requirements for TARGET MECHANISM, NIGHT FIRING, SMALL ARMS, M40.

RECOMMENDED CHANGES TO EQUIPMENT TECHNICAL PUBLICATIONS



THEN... JOT DOWN THE DOPE ABOUT IT ON THIS FORM, CAREFULLY TEAR IT OUT, FOLD IT AND DROP IT IN THE MAIL!

**SOMETHING WRONG WITH THIS PUBLICATION?**

FROM: (PRINT YOUR UNIT'S COMPLETE ADDRESS)

DATE SENT

PUBLICATION NUMBER

PUBLICATION DATE

PUBLICATION TITLE

BE EXACT... PIN-POINT WHERE IT IS

PAGE NO.

PARA-GRAPH

FIGURE NO.

TABLE NO.

IN THIS SPACE TELL WHAT IS WRONG AND WHAT SHOULD BE DONE ABOUT IT:

TEAR ALONG PERFORATED LINE

PRINTED NAME, GRADE OR TITLE, AND TELEPHONE NUMBER

SIGN HERE:

DA FORM 2028-2  
1 JUL 79

PREVIOUS EDITIONS ARE OBSOLETE.

P.S.—IF YOUR OUTFIT WANTS TO KNOW ABOUT YOUR RECOMMENDATION MAKE A CARBON COPY OF THIS AND GIVE IT TO YOUR HEADQUARTERS.

**PIN: 028049-000**